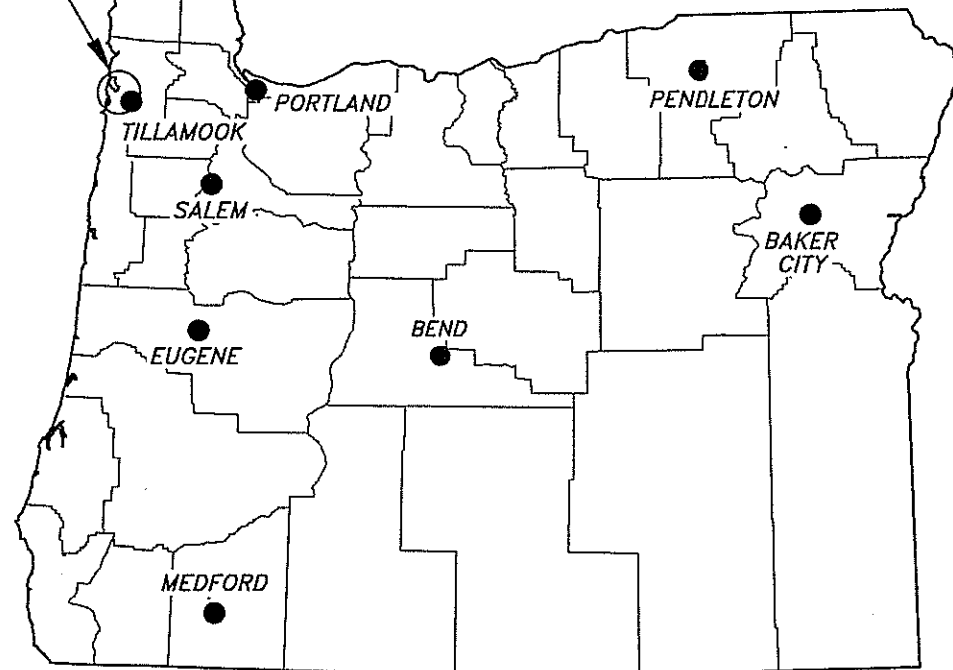


PROJECT LOCATION

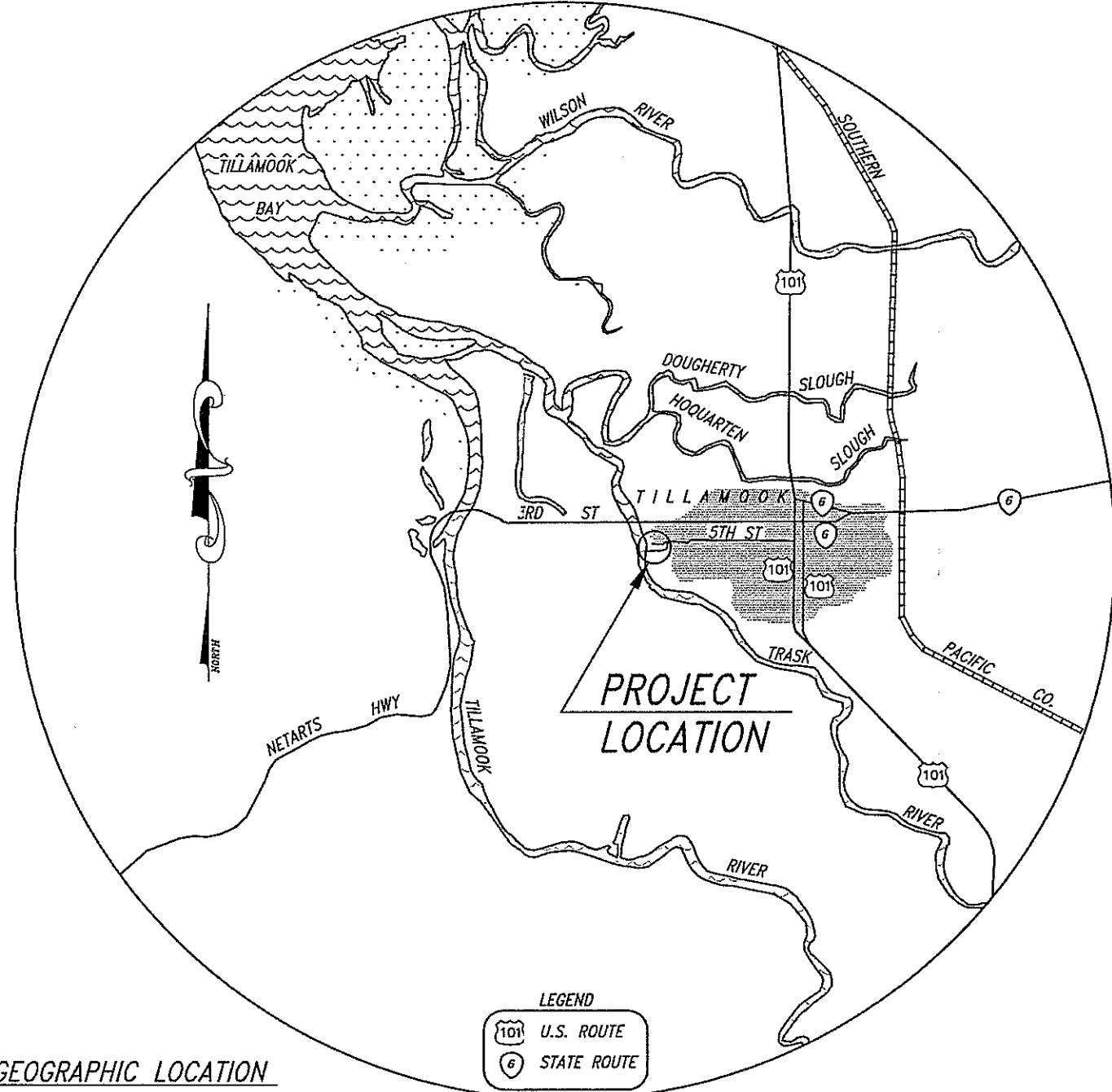


LOCATION MAP

NOT TO SCALE

DRAWING INDEX

01 TITLE SHEET	10 FOAM, CONCRETE, & WALE DETAILS
02 DOCK LAYOUT PLAN	11 TOPSIDE LAYOUT
03 STANDARD DOCK PLAN & ELEVATION	12 FIBERGLASS DECK PANEL DETAILS
04 DOCK W/ EXTERNAL PILE HOOP (RIGHT SIDE)	13 END DOCK MODIFICATIONS
05 DOGLEG DOCK (D04 - RIGHT SIDE)	14 ABUTMENT TRANSITION PLATE
06 ALUMINUM DOCK SECTIONS	15 HINGE BARREL ASSEMBLY DETAILS
07 ALUMINUM DOCK SHELL DETAILS	16 EXTERNAL PILE HOOP ASSEMBLY DETAILS
08 STRUCTURAL LAYOUT	17 PILE HOOP AND HINGE BARREL STIFFENERS
09 STRUCTURAL DETAILS	



GEOGRAPHIC LOCATION

TOWNSHIP 1 SOUTH, RANGE 10 WEST, SECTION 25
 WILLAMETTE MERIDIAN, TILLAMOOK COUNTY, OREGON
 LATITUDE 45.45404° NORTH, LONGITUDE 123.85867° WEST
 USGS QUAD MAP: TILLAMOOK

VICINITY MAP



**ALUMINUM DOCKS - FABRICATE & DELIVER
 AT CARNAHAN PARK, TRASK RIVER - MILE 1.4
 FOR THE CITY OF TILLAMOOK**

DATE	REVISIONS	BY

APPROVED: BOATING FACILITIES MANAGER	DESIGNED BY	DATE
<i>[Signature]</i>	S. JANTZE	01 JAN 2016
FRACHECK BY	DRAWN BY	
<i>[Signature]</i>	S. JANTZE	



TITLE SHEET
 AT CARNAHAN PARK, TRASK RIVER - MILE 1.4
 FOR THE CITY OF TILLAMOOK

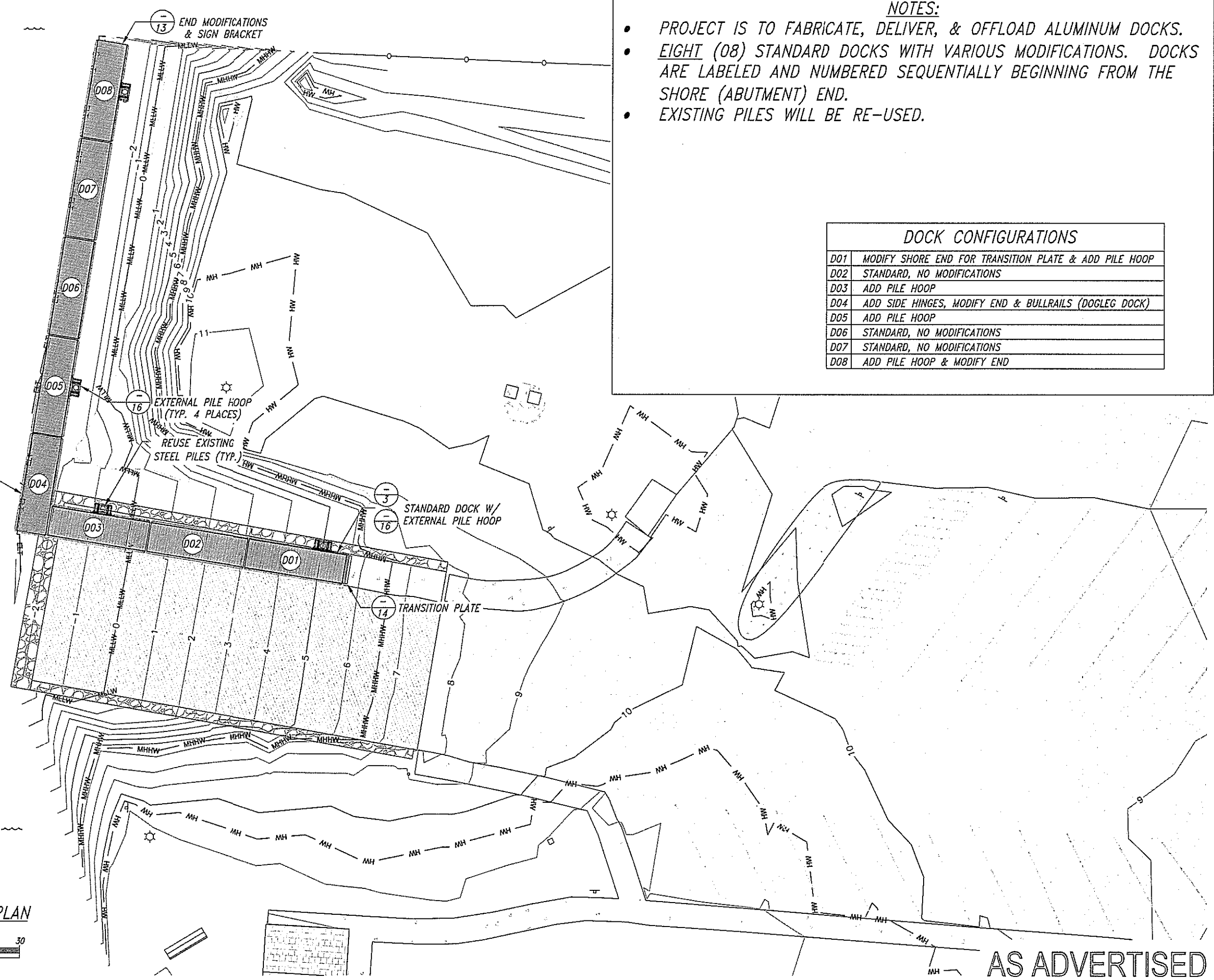
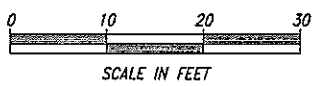
OREGON STATE MARINE BOARD

01 SHEET	17 OF
2915 - 1550 - 01 DRAWING NO.	

AS ADVERTISED

TRASK RIVER - MILE 1.4

DOCK LAYOUT PLAN



NOTES:

- PROJECT IS TO FABRICATE, DELIVER, & OFFLOAD ALUMINUM DOCKS.
- EIGHT (08) STANDARD DOCKS WITH VARIOUS MODIFICATIONS. DOCKS ARE LABELED AND NUMBERED SEQUENTIALLY BEGINNING FROM THE SHORE (ABUTMENT) END.
- EXISTING PILES WILL BE RE-USED.

DOCK CONFIGURATIONS	
D01	MODIFY SHORE END FOR TRANSITION PLATE & ADD PILE HOOP
D02	STANDARD, NO MODIFICATIONS
D03	ADD PILE HOOP
D04	ADD SIDE HINGES, MODIFY END & BULLRAILS (DOGLEG DOCK)
D05	ADD PILE HOOP
D06	STANDARD, NO MODIFICATIONS
D07	STANDARD, NO MODIFICATIONS
D08	ADD PILE HOOP & MODIFY END

BY	
REVISIONS	
DATE	

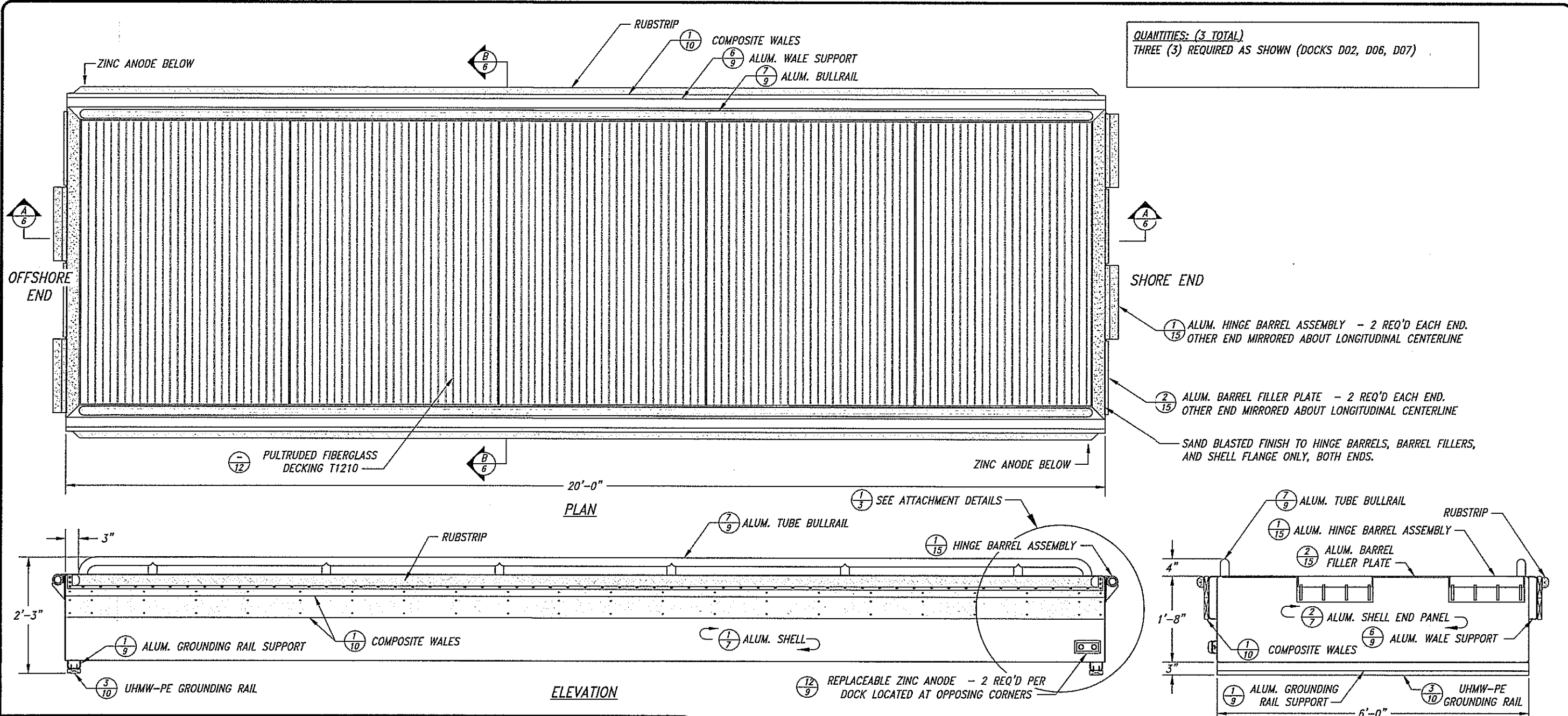
APPROVED: BOATING FACILITIES MANAGER
 S. JANTZE
 DESIGNED BY
 S. JANTZE
 DRAWN BY
 DATE
 01 JAN 2016



DOCK LAYOUT PLAN
 AT CARNAHAN PARK, TRASK RIVER - MILE 1.4
 FOR THE CITY OF TILLAMOOK

OREGON STATE MARINE BOARD

AS ADVERTISED

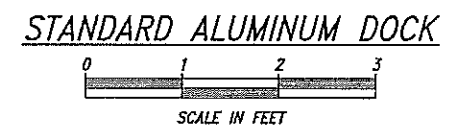
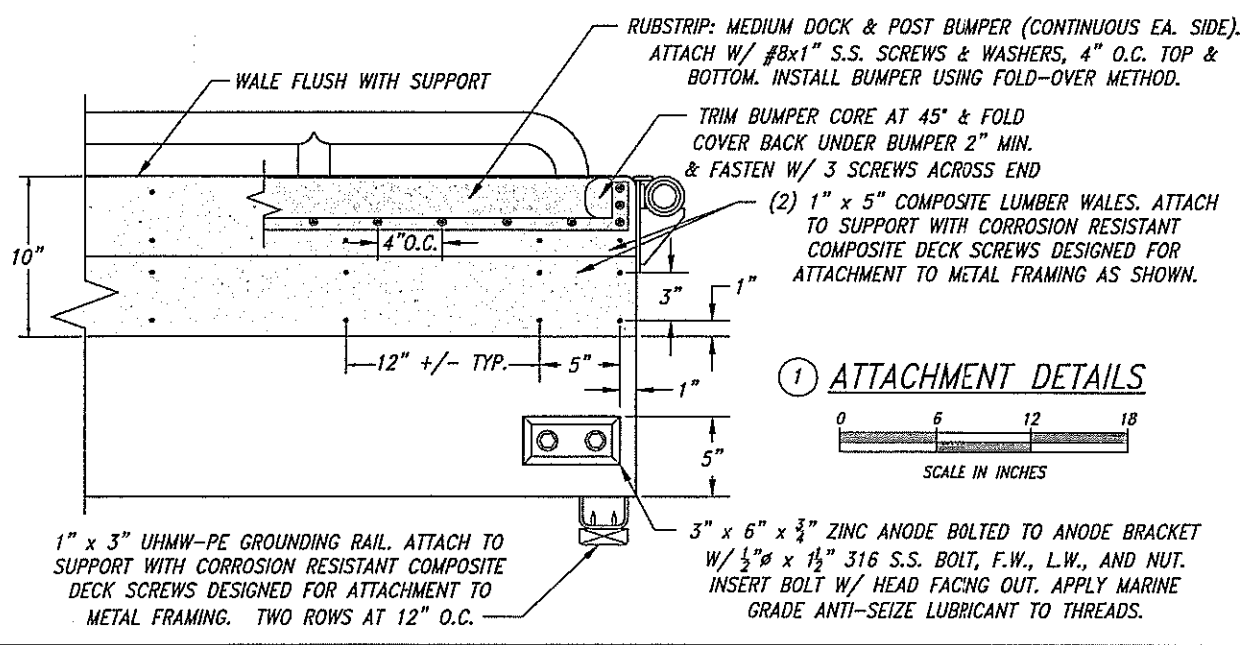
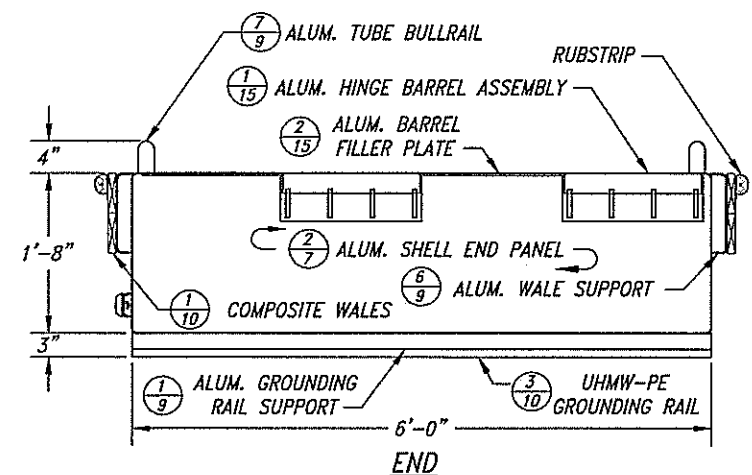


QUANTITIES: (3 TOTAL)
THREE (3) REQUIRED AS SHOWN (DOCKS D02, D06, D07)

① ALUM. HINGE BARREL ASSEMBLY - 2 REQ'D EACH END. OTHER END MIRRORED ABOUT LONGITUDINAL CENTERLINE

② ALUM. BARREL FILLER PLATE - 2 REQ'D EACH END. OTHER END MIRRORED ABOUT LONGITUDINAL CENTERLINE

SAND BLASTED FINISH TO HINGE BARRELS, BARREL FILLERS, AND SHELL FLANGE ONLY, BOTH ENDS.



NOTES:
1. ALL PLATE, FLAT BAR, AND FORMED SHAPES SHALL BE 5086 ALUMINUM ALLOY PER SPECIFICATIONS.
2. ALL ROUND TUBE SHALL BE 6061 ALUMINUM ALLOY PER SPECIFICATIONS.

- ANTICIPATED ASSEMBLY SEQUENCE:
1. FABRICATE SHELL
 2. INSTALL SHELL END PANELS
 3. INSTALL GROUNDING RAIL SUPPORTS & GROUNDING RAILS
 4. INSTALL BULKHEADS
 5. INSTALL BOTTOM STIFFENERS
 6. INSTALL END STIFFENERS
 7. INSTALL BULLRAIL GUSSETS
 8. INSTALL WALE SUPPORTS & ANODE BRACKETS
 9. INSTALL HINGE BARREL ASSEMBLIES & FILLER PLATES
 10. INSTALL BULLRAILS
 11. SANDBLAST HINGE BARRELS AND ADJACENT SHELL FLANGE
 12. APPLY BARRIER COATING PRIOR TO PLACING CONCRETE
 13. INSTALL CONCRETE BALLAST
 14. INSTALL FOAM FLOATATION
 15. INSTALL & SECURE TOP COVERS
 16. INSTALL & SECURE TOP COVER SPACERS
 17. INSTALL DECK SUPPORTS
 18. INSTALL DECKING
 19. INSTALL WALES
 20. INSTALL RUBSTRIPS
 21. INSTALL ZINC ANODES

DATE	REVISIONS	BY

APPROVED: BOATING FACILITIES MANAGER
S. JANTZE
DESIGNED BY
S. JANTZE
DRAWN BY
S. JANTZE
DATE
01 JAN 2016



STANDARD DOCK PLAN & ELEVATION
AT CARNAHAN PARK, TRASK RIVER - MILE 1.4
FOR THE CITY OF TILLAMOOK

OREGON STATE MARINE BOARD

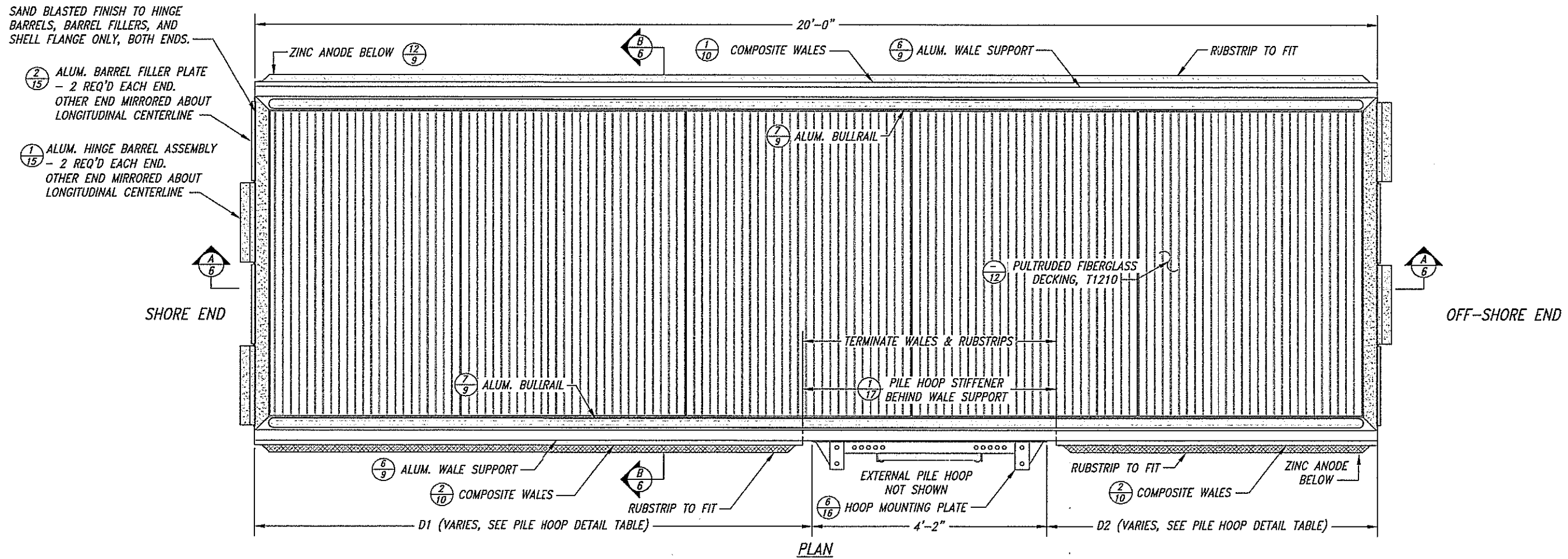
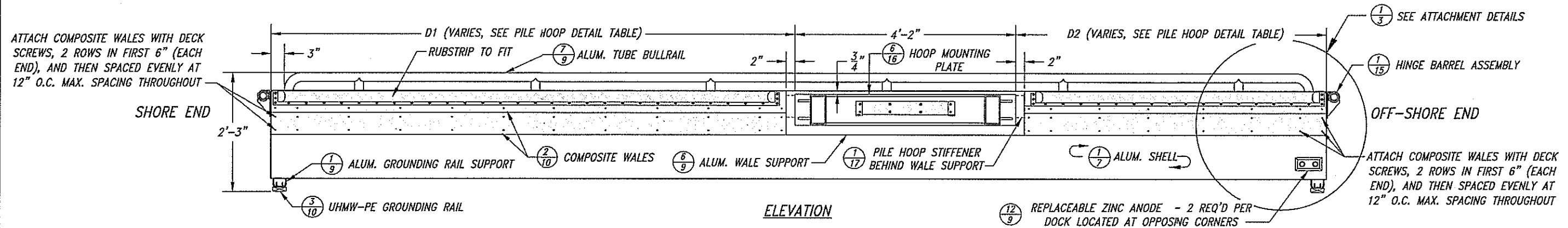
03 SHEET OF 17
2915 - 1550 - 03
DRAWING NO.

AS ADVERTISED

PILE HOOP DETAIL TABLE			
DOCK No.	MODIFICATIONS FROM STANDARD	D1	D2
D01	AS SHOWN	2'-5"	13'-5"
D03	AS SHOWN	7'-1"	8'-9"
D05	AS SHOWN	8'-3"	7'-7"
D08	LAST DOCK END MODIFICATIONS	8'-3"	7'-7"

D1 = DISTANCE FROM THE SHORE END OF THE DOCK
D2 = DISTANCE FROM THE OFF-SHORE END OF THE DOCK.
D1 & D2 ARE MEASURED FROM THE END OF THE DOCK SHELL TO THE LEADING EDGE OF THE HOOP MOUNTING PLATE.

REFERENCE STANDARD ALUMINUM DOCK DETAILS FOR CONSTRUCTION, MODIFY AS SHOWN ON THIS PAGE FOR INSTALLATION OF EXTERNAL PILE HOOP PLATE, RIGHT SIDE.



DOCK W/ EXTERNAL HOOP MOUNTING PLATE (RIGHT SIDE)



DATE	REVISIONS	BY

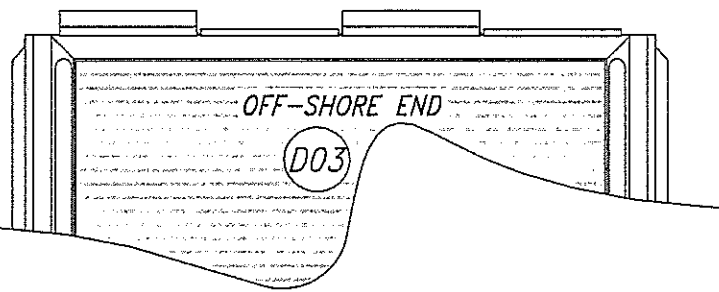
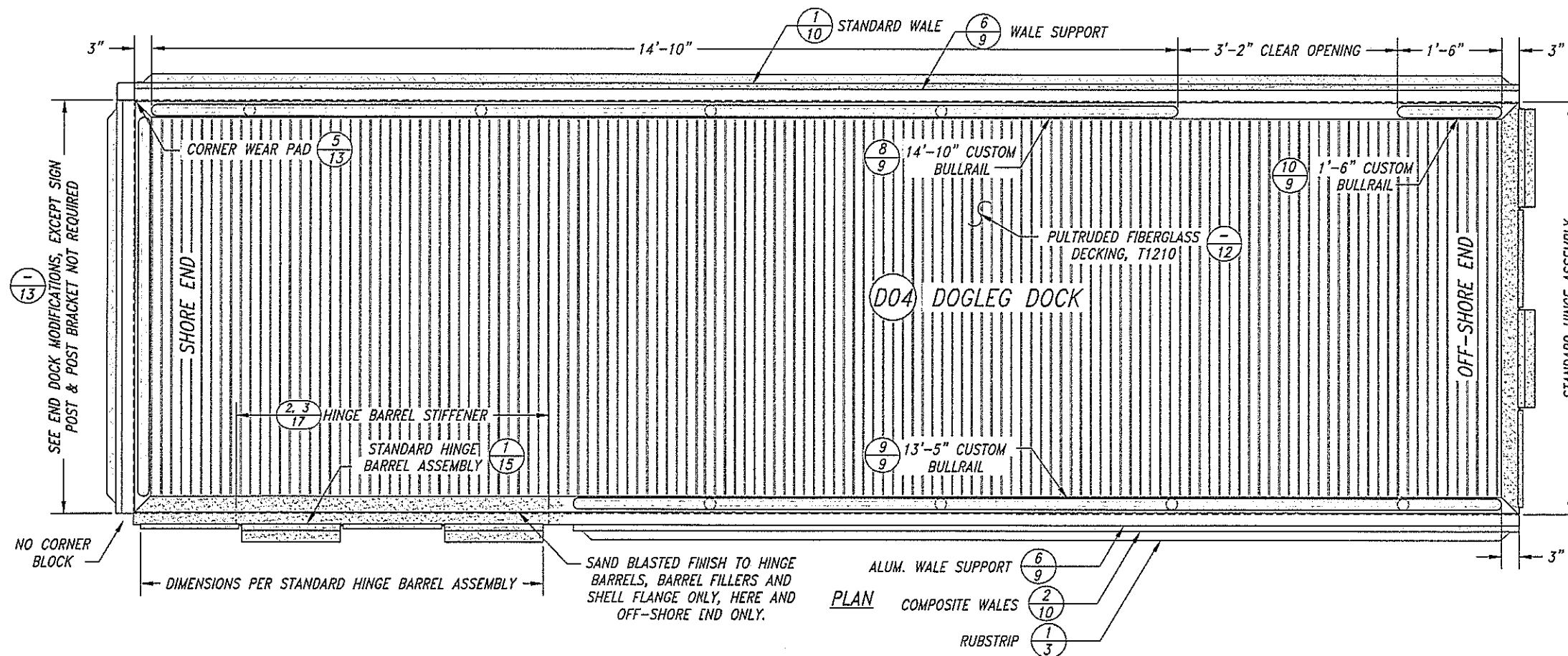
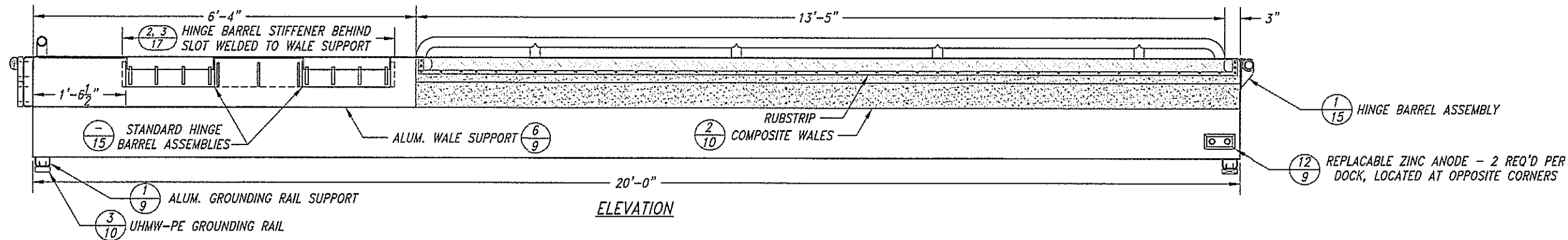
APPROVED: BOATING FACILITIES MANAGER
[Signature]
FINAL CHECK BY
[Signature]
DESIGNED BY
S. JANTZE
DRAWN BY
S. JANTZE
DATE
01 JAN 2016



DOCK W/ EXTERNAL PILE HOOP (RIGHT SIDE)
AT CARNAHAN PARK, TRASK RIVER - MILE 1.4
FOR THE CITY OF TILLAMOOK

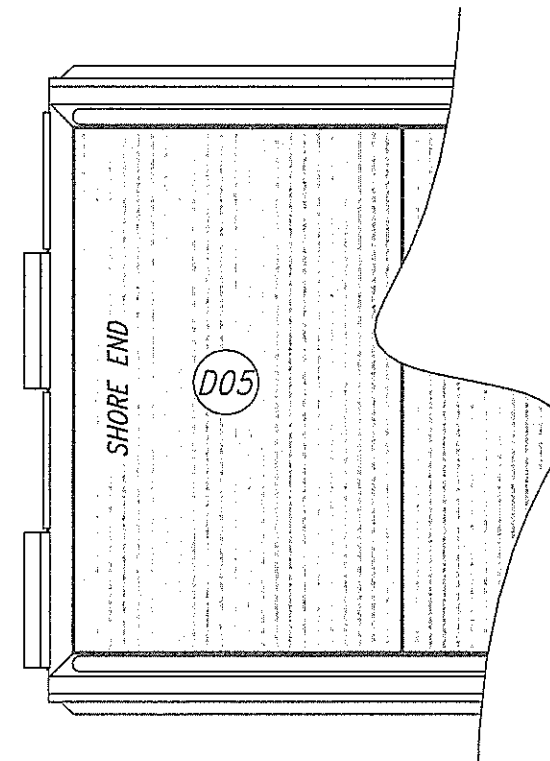
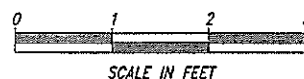
OREGON STATE MARINE BOARD

AS ADVERTISED



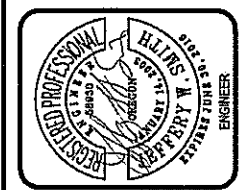
REFERENCE STANDARD ALUMINUM DOCK DETAILS FOR CONSTRUCTION, MODIFY AS SHOWN ON THIS PAGE

DOGLEG DOCK, RIGHT SIDE



DATE	REVISIONS	BY

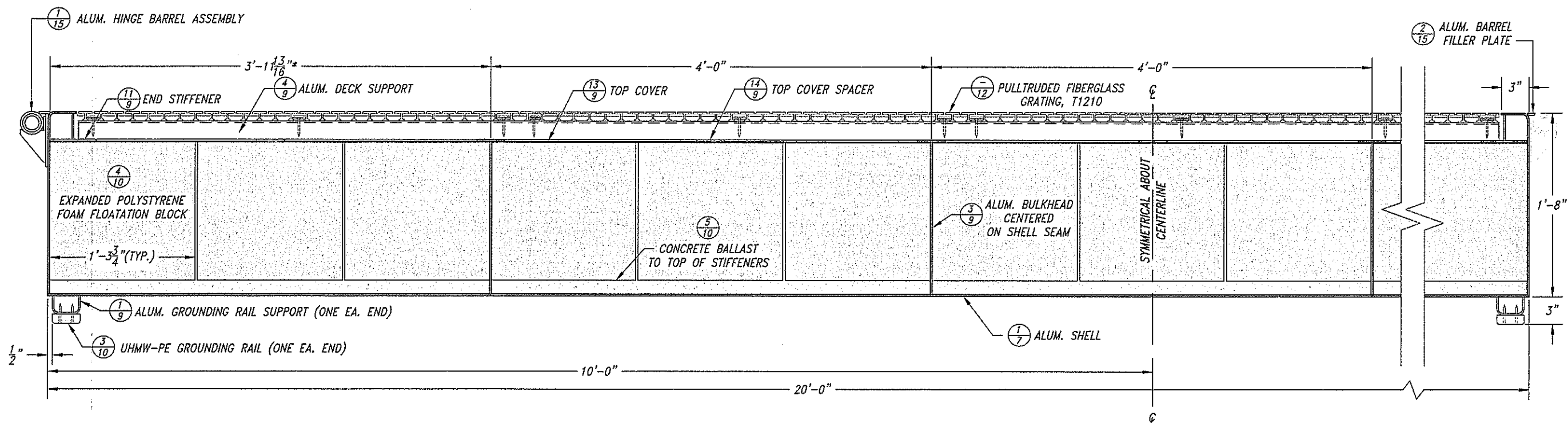
APPROVED: BOATING FACILITIES MANAGER
 S. JANITZE
 DESIGNED BY
 S. JANITZE
 DRAWN BY
 DATE
 01 JAN 2016



DOGLEG DOCK (D04 - RIGHT SIDE)
 AT CARNAHAN PARK, TRASK RIVER - MILE 1.4
 FOR THE CITY OF TILLAMOOK

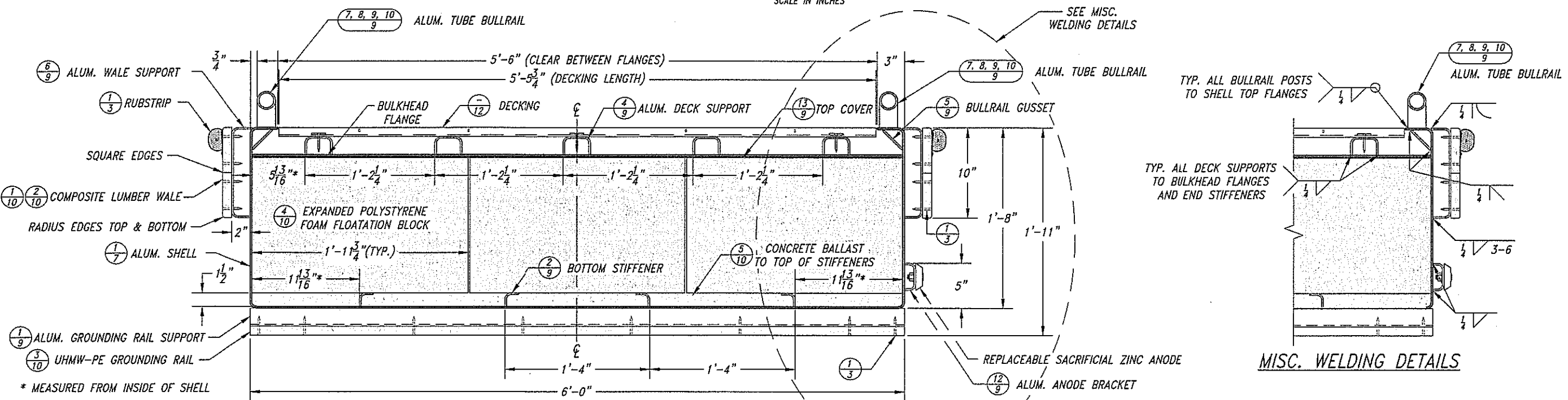
OREGON STATE MARINE BOARD

AS ADVERTISED



* MEASURED FROM INSIDE OF SHELL

SECTION A-A
SCALE IN INCHES



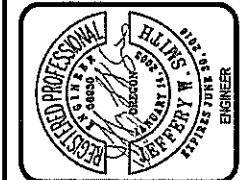
* MEASURED FROM INSIDE OF SHELL

SECTION B-B
SCALE IN INCHES

NOTES:
1. ALL PLATE, FLAT BAR, AND FORMED SHAPES SHALL BE 5086 ALUMINUM ALLOY PER SPECIFICATIONS.
2. ALL ROUND TUBE SHALL BE 6061 ALUMINUM ALLOY PER SPECIFICATIONS.

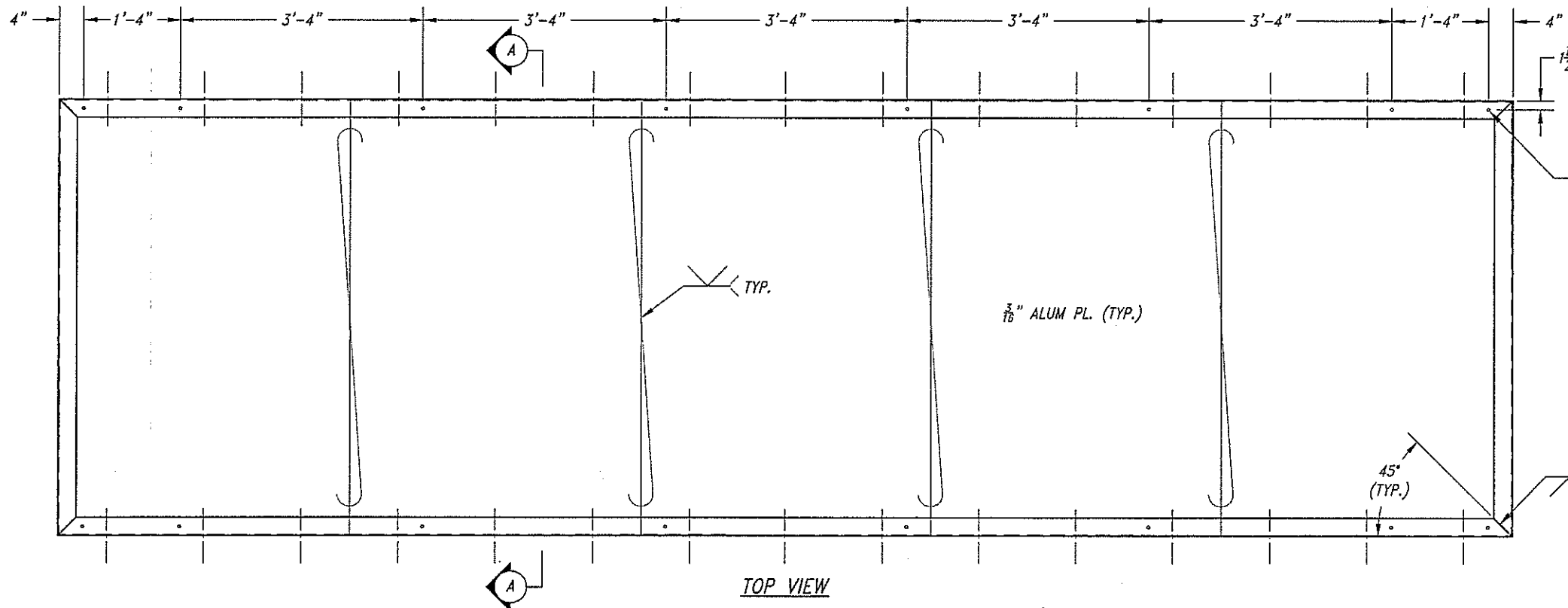
BY	
REVISIONS	
DATE	

APPROVED: BOATING FACILITIES MANAGER
FINN CHECK BY: [Signature]
DESIGNED BY: S. JANTZE
DRAWN BY: S. JANTZE
DATE: 01 JAN 2016



ALUMINUM DOCK SECTIONS
AT CARNAHAN PARK, TRASK RIVER - MILE 1.4
FOR THE CITY OF TILLAMOOK
OREGON STATE MARINE BOARD

AS ADVERTISED

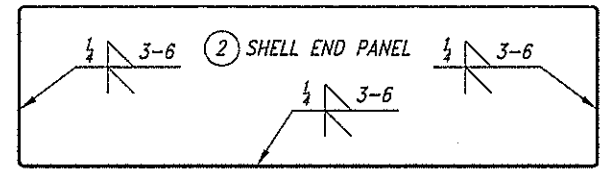
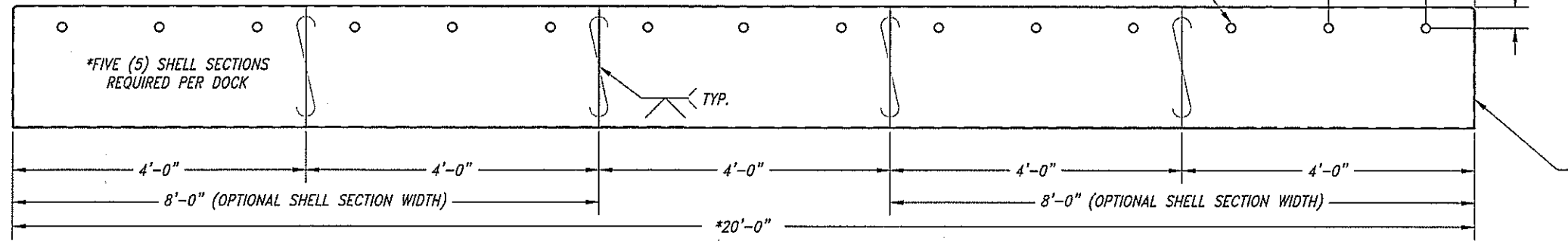


NOTES:
 1. ALL PLATE, FLAT BAR, AND FORMED SHAPES SHALL BE 5086 ALUMINUM ALLOY PER SPECIFICATIONS.
 2. ALL ROUND TUBE SHALL BE 6061 ALUMINUM ALLOY PER SPECIFICATIONS.

$\frac{1}{2}$ " ϕ BULLRAIL VENT HOLES, 8 TYP. EACH SIDE.
 DIMENSIONS SHOWN ARE FOR FULL LENGTH (19'-6") BULLRAILS.
 CUSTOM BULLRAILS (ON DOCK D04) SHALL HAVE VENT HOLES CORRESPONDING TO POST SPACING.

EACH SHELL SECTION (BOTTOM, SIDES AND TOP FLANGES) SHALL BE FORMED BY BENDING 4' x 10' OR 8' x 10' SHEETS OF ALUM. PLATE CUT TO LENGTH TO MEET DIMENSION REQUIREMENTS. ALL BENDS SHALL BE 90° WITH MAX. $\frac{1}{2}$ " INSIDE RADII. SHELL SECTIONS SHALL NOT BE FABRICATED FROM SEPARATE PIECES WELDED TOGETHER.

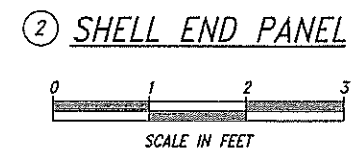
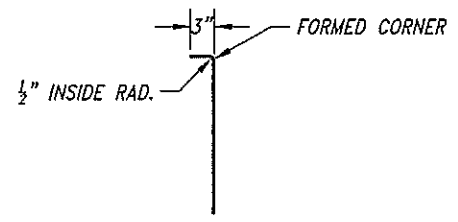
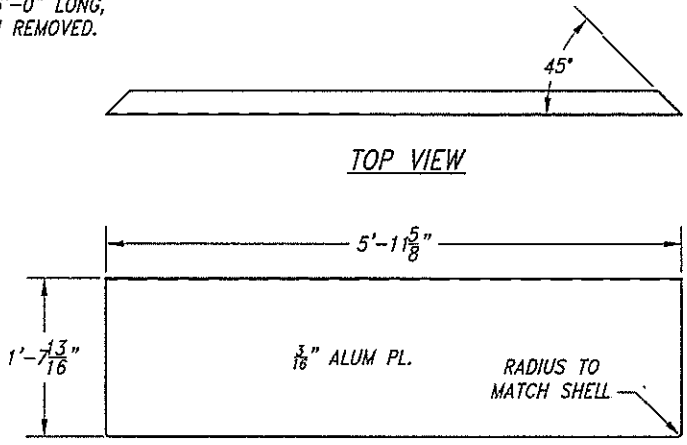
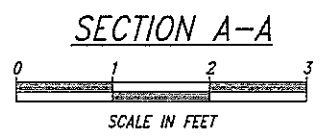
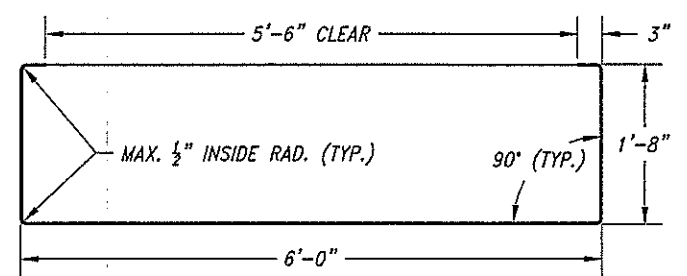
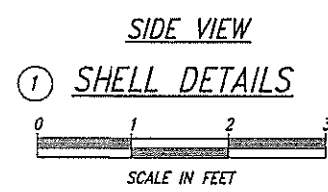
(15) $\frac{1}{2}$ " DIA. HOLES @ 16" O.C. BOTH SIDES FOR DRAINAGE.



SHELL END PANEL INSET AND FLUSH WITH END OF SHELL

*THREE (3) SHELL SECTIONS REQUIRED IF USING A COMBINATION OF 8' AND 4' WIDE SECTIONS

*ONE DOCK SECTION (R6) FOR THIS PROJECT IS 16'-0" LONG, STANDARD DESIGN WITH CENTER 4' SHELL SECTION REMOVED.



DATE	REVISIONS	BY

DESIGNED BY S. JANTZE	DATE 01 JAN 2016
DRAWN BY S. JANTZE	
APPROVED BY S. JANTZE	

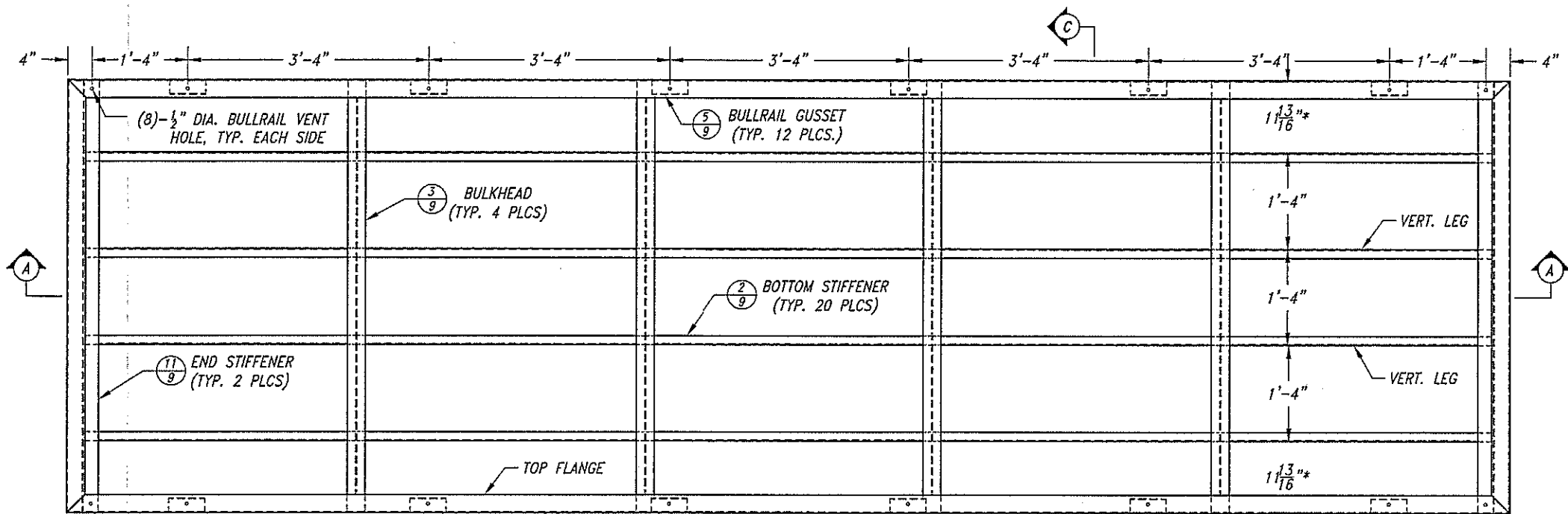


ALUMINUM DOCK SHELL DETAILS
 AT CARNAHAN PARK, TRASK RIVER - MILE 1.4
 FOR THE CITY OF TILLAMOOK

OREGON STATE MARINE BOARD

07 SHEET	17 OF
2915 - 1550 - 07 DRAWING NO.	

AS ADVERTISED

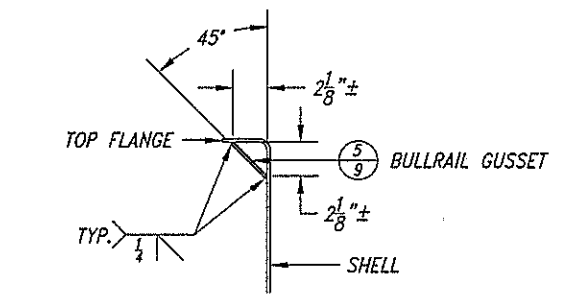


NOTE: BULLRAIL GUSSETS STILL REQUIRED ON DOGLEG DOCKS (L6 AND R5) AT SIDE HINGE BARREL ASSEMBLY AREAS.

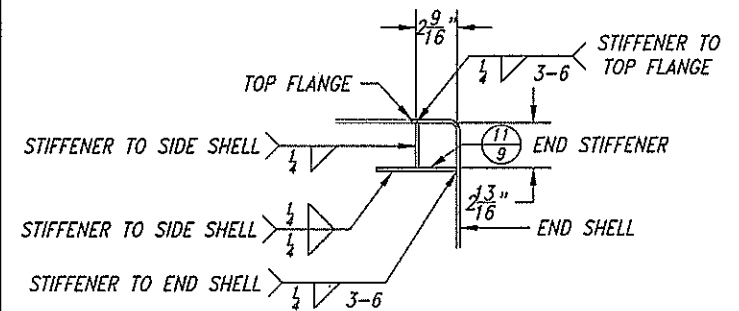
SHELL PLAN VIEW



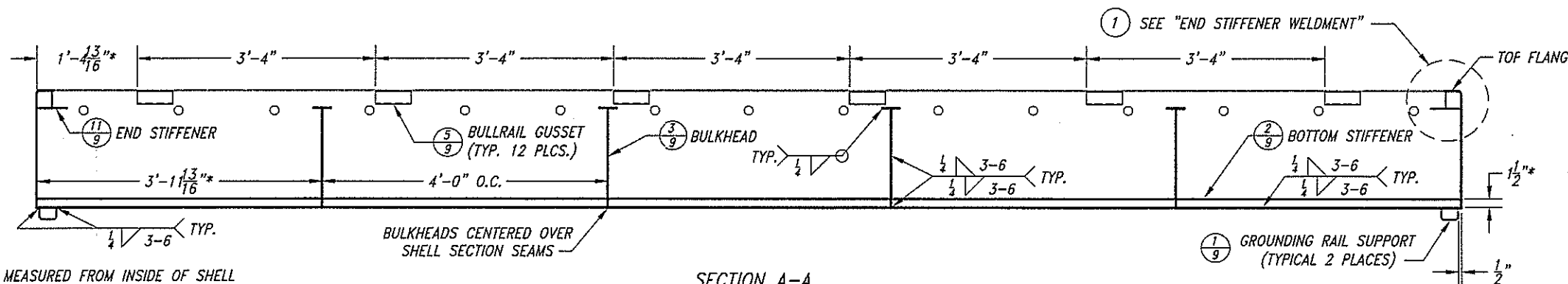
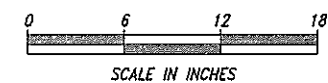
* MEASURED FROM INSIDE OF SHELL



2 BULLRAIL GUSSET WELDMENT



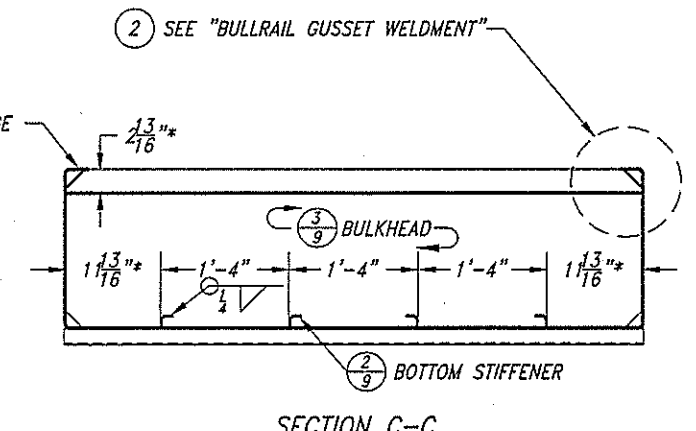
1 END STIFFENER WELDMENT



* MEASURED FROM INSIDE OF SHELL

SECTION A-A

STRUCTURAL LAYOUT



* MEASURED FROM INSIDE OF SHELL

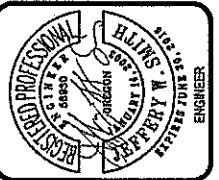
SECTION C-C

NOTES:
 1. ALL PLATE, FLAT BAR, AND FORMED SHAPES SHALL BE 5086 ALUMINUM ALLOY PER SPECIFICATIONS.
 2. ALL ROUND TUBE SHALL BE 6061 ALUMINUM ALLOY PER SPECIFICATIONS.

AS ADVERTISED

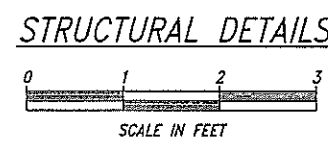
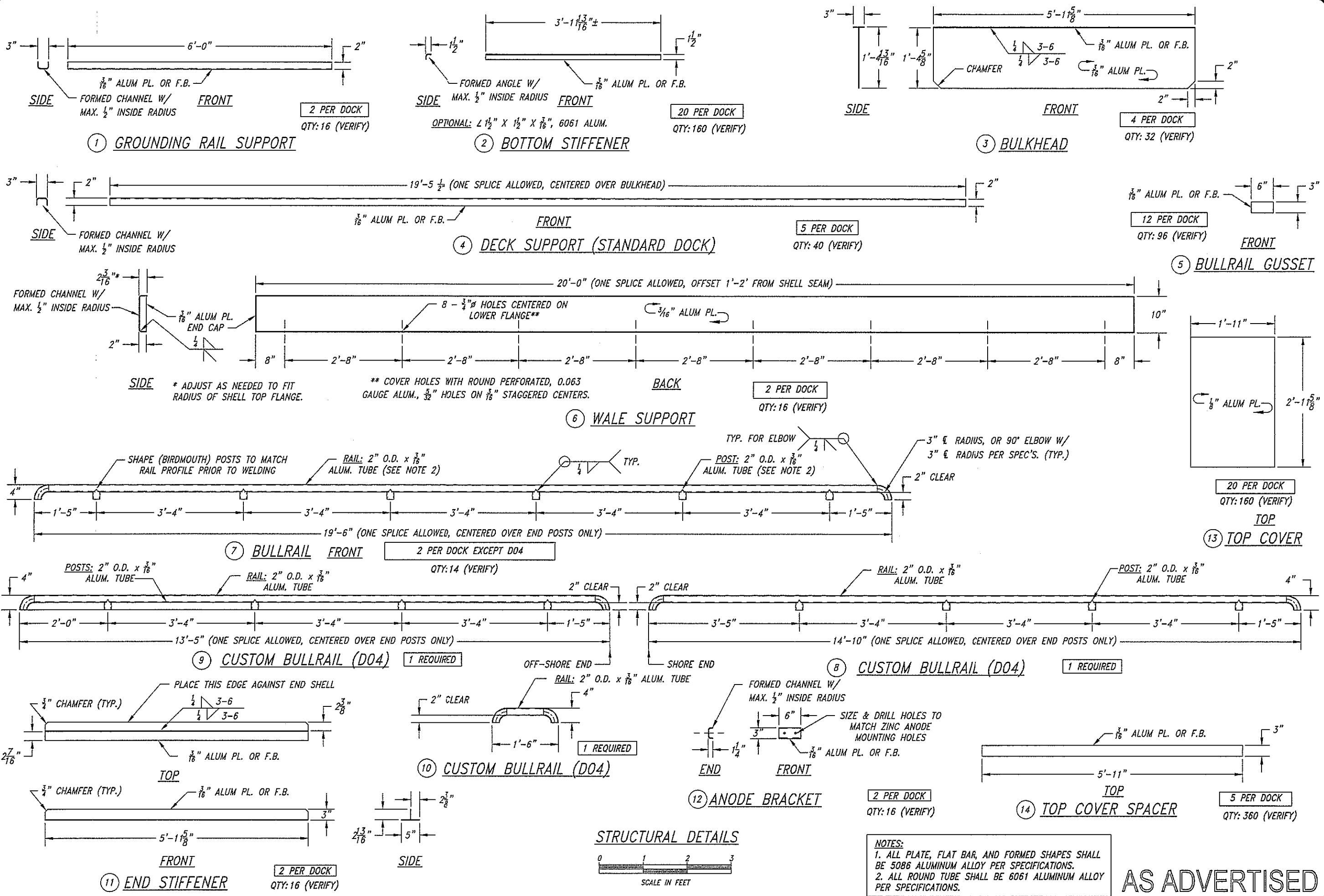
DATE	REVISIONS

APPROVED: BOATING FACILITIES MANAGER	DESIGNED BY	DATE
<i>[Signature]</i>	S. JANTZE	01 JAN 2016
FINAL CHECK BY	DRAWN BY	
<i>[Signature]</i>	S. JANTZE	



STRUCTURAL LAYOUT
 AT CARNAHAN PARK, TRASK RIVER - MILE 1.4
 FOR THE CITY OF TILLAMOOK

OREGON STATE MARINE BOARD



NOTES:
 1. ALL PLATE, FLAT BAR, AND FORMED SHAPES SHALL BE 5086 ALUMINUM ALLOY PER SPECIFICATIONS.
 2. ALL ROUND TUBE SHALL BE 6061 ALUMINUM ALLOY PER SPECIFICATIONS.

AS ADVERTISED

BY	
REVISIONS	
DATE	

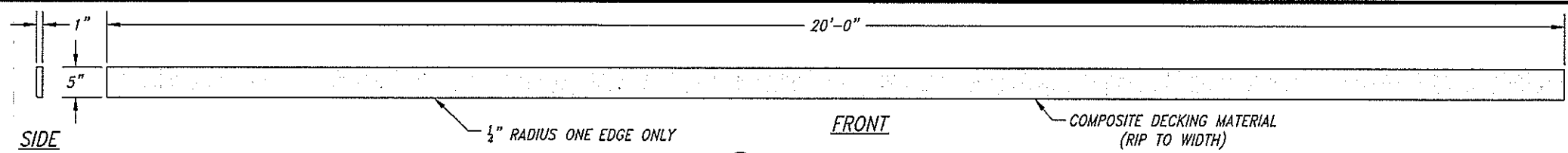
DESIGNED BY	S. JANTZE	DATE	01 JAN 2016
DRAWN BY	S. JANTZE	DRAWING NO.	
APPROVED BY			
FINAL CHECK BY			



STRUCTURAL DETAILS
 AT CARNAHAN PARK, TRASK RIVER - MILE 1.4
 FOR THE CITY OF TILLAMOOK

OREGON STATE MARINE BOARD

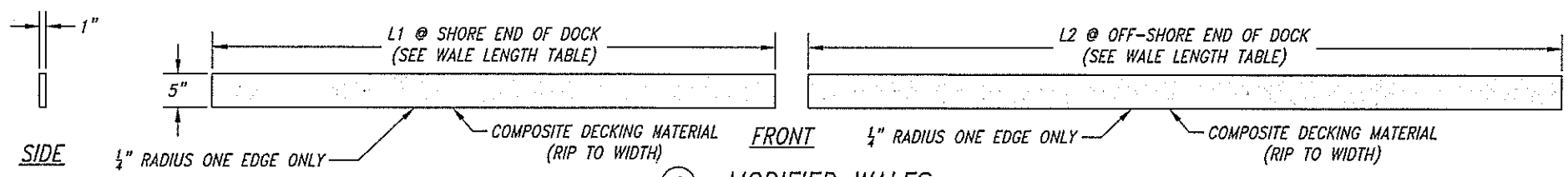
09 SHEET 17 OF 17
 2915 - 1550 - 09
 DRAWING NO.



① **STANDARD WALE**
SCALE IN FEET

SEE STANDARD WALE QUANTITY TABLE
QTY: 22 (VERIFY)

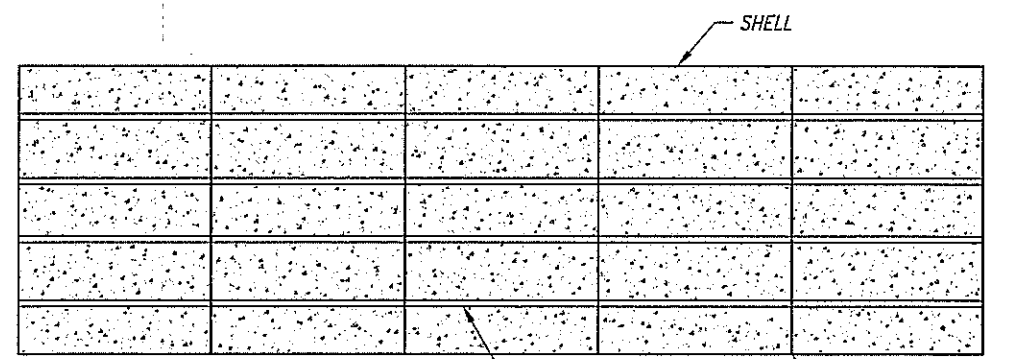
DOCK No.	QTY
D01	2
D02	4
D03	2
D04	2
D05	2
D06	4
D07	4
D08	2



② **MODIFIED WALES**
SCALE IN FEET

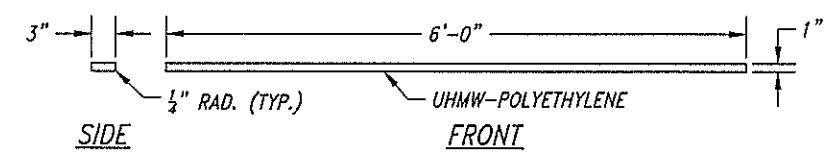
SEE MODIFIED WALE LENGTH/QTY TABLE
QTY: 18 (VERIFY)

DOCK No.	L1	QTY	L2	QTY
D01	2'-3"	2	13'-3"	2
D03	6'-11"	2	8'-7"	2
D04	N/A	-	13'-8"	2
D05	8'-1"	2	7'-5"	2
D08	8'-2"	2	7'-4"	2



CONCRETE QUANTITY: 15 CU. FT. ±

PLAN VIEW



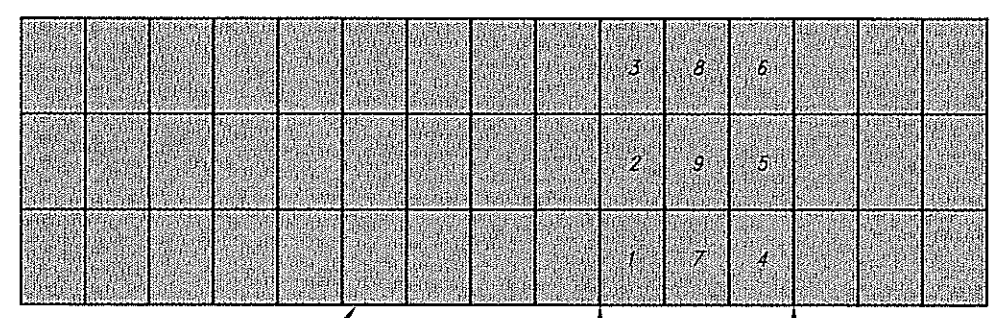
③ **GROUNDING RAIL**
SCALE IN FEET

2 PER DOCK
QTY: 16

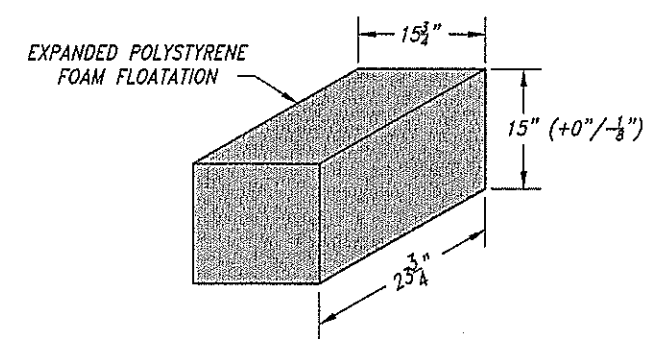
9 BLOCKS PER BAY BETWEEN BULKHEADS. PLACE PER SEQUENCE SHOWN (6 BLOCKS AGAINST BULKHEADS FIRST, THEN 2 BLOCKS AGAINST SHELL SIDES, THEN CENTER BLOCK LAST).

⑤ **CONCRETE BALLAST PLACEMENT STANDARD DOCK**

NTS
PLACE CONCRETE BALLAST FLUSH WITH TOP OF BOTTOM STIFFENERS (1 1/2" DEPTH) IN ALL BAYS. APPLY BARRIER COATING TO ALL INTERIOR SURFACES IN CONTACT WITH CONCRETE PRIOR TO PLACING CONCRETE.



PLAN VIEW
FOAM PLACEMENT SUGGESTION
NTS



④ **FOAM BLOCK DETAILS**
SCALE IN FEET
45 PER STANDARD DOCK

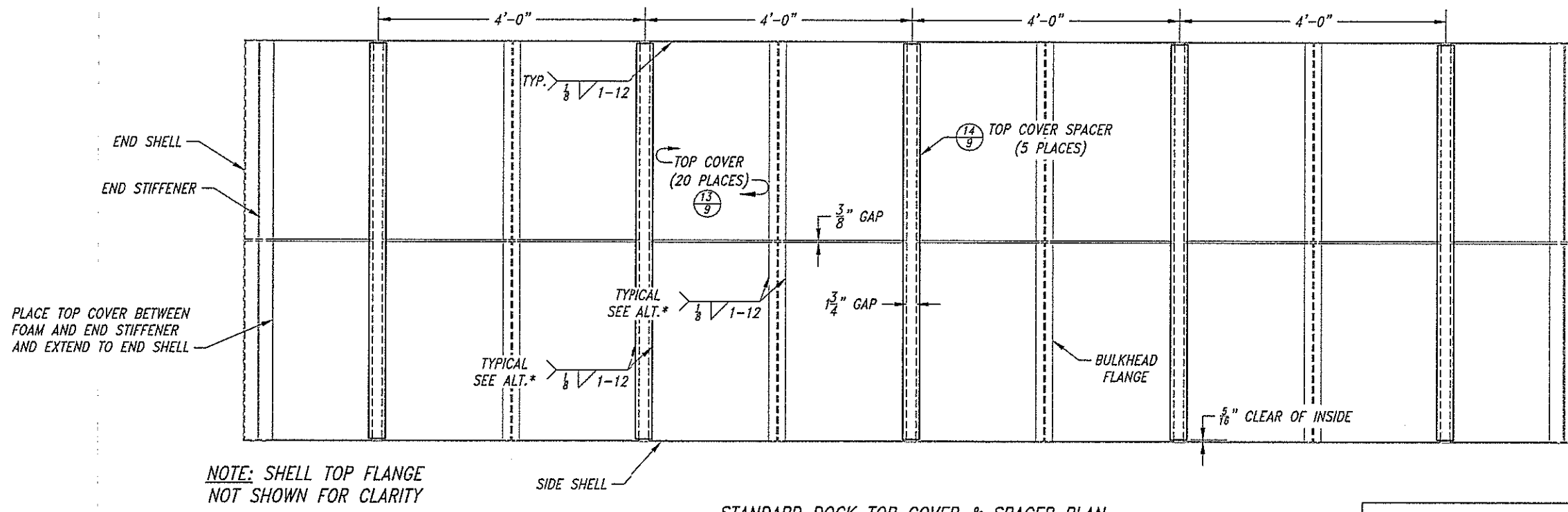
DATE	REVISIONS	BY

APPROVED: BOATING FACILITIES MANAGER
DESIGNED BY: S. JANTZE
DRAWN BY: S. JANTZE
DATE: 01 JAN 2016



OREGON STATE MARINE BOARD
FOAM, CONCRETE, & WALE DETAILS
AT CARNAHAN PARK, TRASK RIVER - MILE 1.4
FOR THE CITY OF TILLAMOOK

AS ADVERTISED



NOTE: SHELL TOP FLANGE NOT SHOWN FOR CLARITY

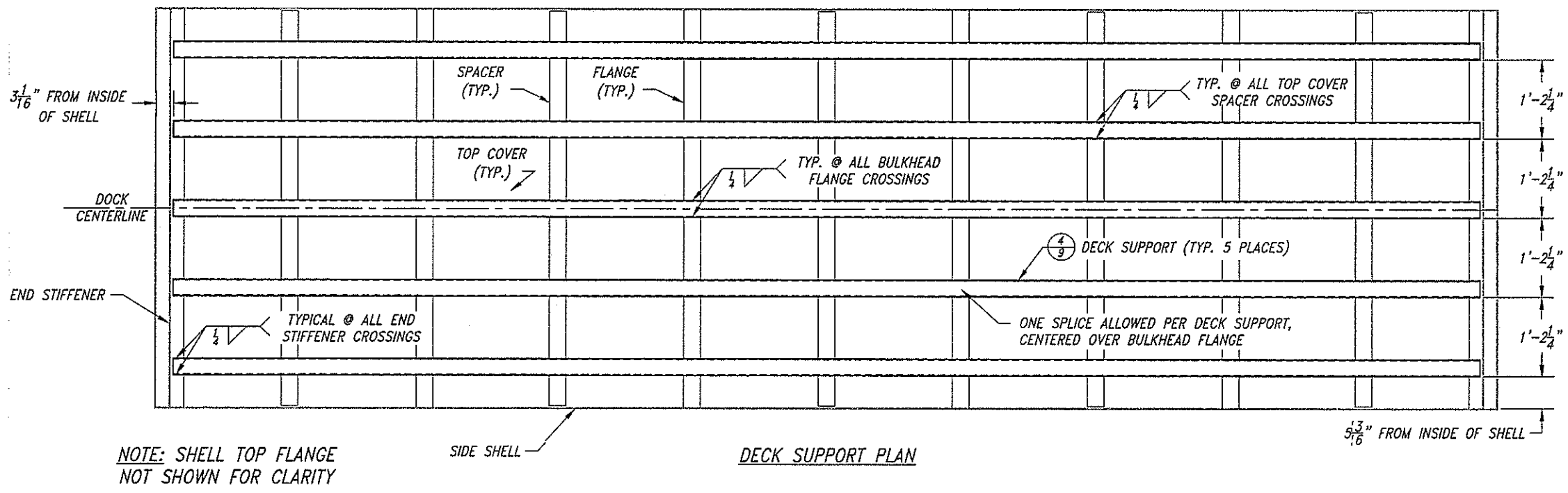
STANDARD DOCK TOP COVER & SPACER PLAN

PLACE TOP COVERS ON FOAM WITH ONE EDGE UNDER BULKHEAD FLANGE AND AGAINST BULKHEAD. SLIDE ADJACENT EDGE AGAINST SIDE SHELL. TACK WELD AS SHOWN TAKING CARE TO AVOID/MINIMIZE MELTING OF FOAM. SIDE GAP BETWEEN COVERS WILL BE 1/2" AND END GAP WILL BE 3/8".

CENTER TOP COVER SPACERS OVER SIDE GAP BETWEEN TOP COVERS WITH 3/8" CLEAR FROM SIDE SHELL. TACK WELD AS SHOWN TAKING CARE TO AVOID/MINIMIZE MELTING OF FOAM.

* AS AN ALTERNATIVE TO TACK WELDING, TOP COVERS MAY BE SCREWED OR RIVETED TO BULKHEAD FLANGES AND SPACERS USING S.S. FASTENERS SPACED 12" O.C.

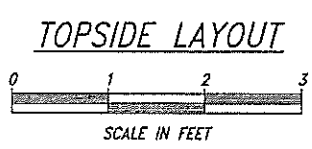
TOP COVER, TOP COVER SPACER, AND DECK SUPPORT POSITIONS AND SPACINGS FOR THE SHORT DOCK (R6) ARE SIMILAR TO WHAT IS SHOWN ON THIS SHEET.



NOTE: SHELL TOP FLANGE NOT SHOWN FOR CLARITY

DECK SUPPORT PLAN

NOTES:
 1. ALL PLATE, FLAT BAR, AND FORMED SHAPES SHALL BE 5086 ALUMINUM ALLOY PER SPECIFICATIONS.
 2. ALL ROUND TUBE SHALL BE 6061 ALUMINUM ALLOY PER SPECIFICATIONS.



DATE	BY

APPROVED: BOATING FACILITIES MANAGER	DESIGNED BY	DATE
<i>[Signature]</i>	S. JANTZE	01 JAN 2016
FINAL CHECK BY	DRAWN BY	
<i>[Signature]</i>	S. JANTZE	

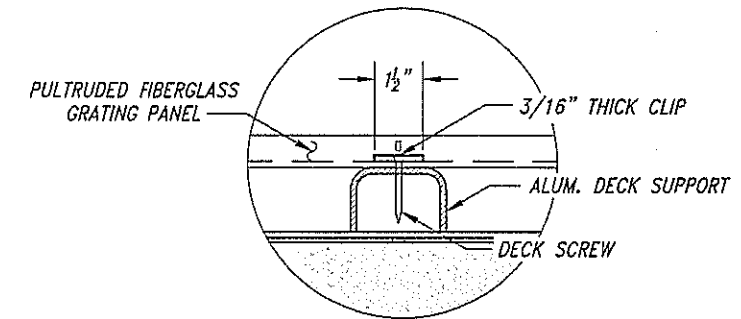


TOPSIDE LAYOUT
 AT CARNAHAN PARK, TRASK RIVER - MILE 1.4
 FOR THE CITY OF TILLAMOOK

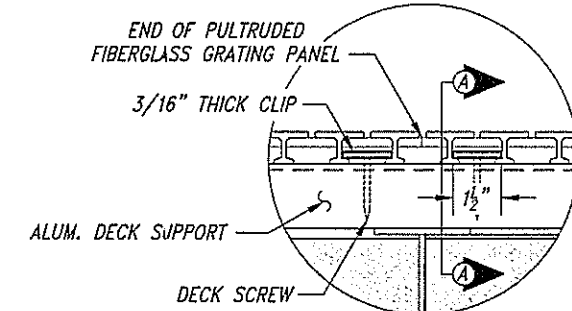
OREGON STATE MARINE BOARD

11	17
SHEET	OF
2915 - 1550 - 11	
DRAWING NO.	

AS ADVERTISED

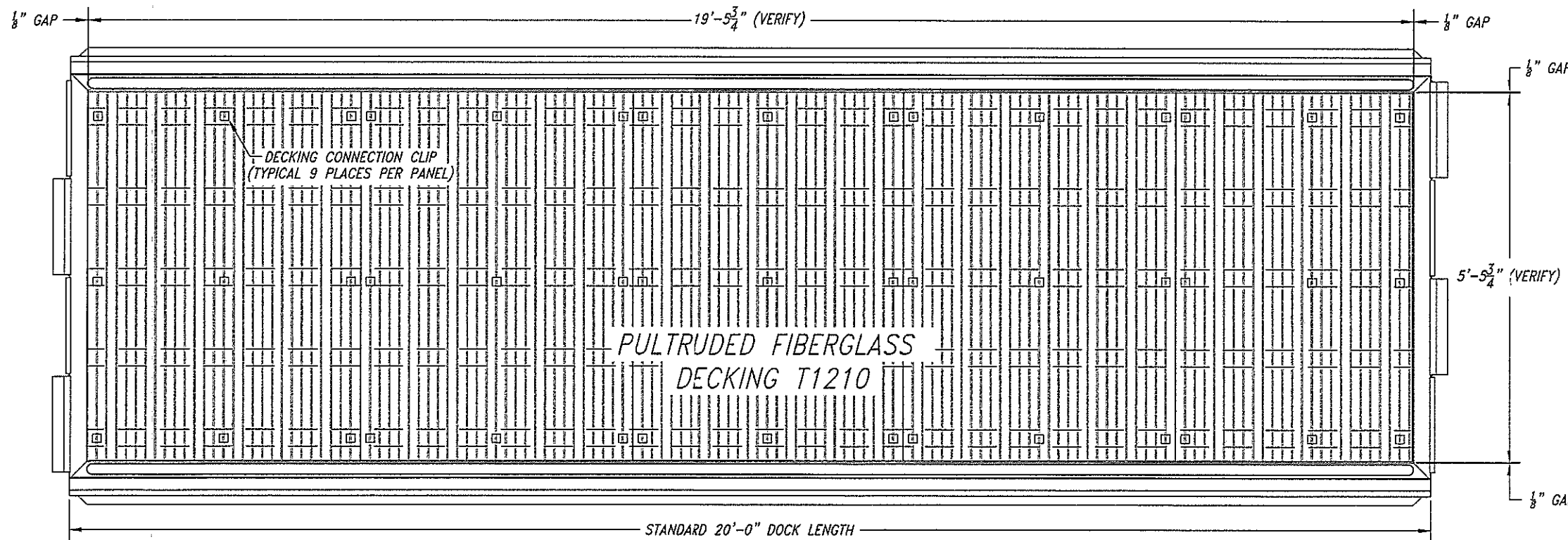
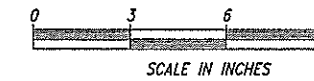


SECTION A-A

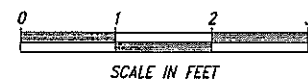


9 CONNECTIONS REQUIRED EACH PANEL
3 BOTH ENDS, 3 IN MIDDLE

DECKING CONNECTION DETAILS



PULTRUDED FIBERGLASS DECKING LAYOUTS



AS ADVERTISED

BY	
REVISIONS	
DATE	

APPROVED: BOATING FACILITIES MANAGER	DESIGNED BY	DATE
<i>[Signature]</i>	S. JANTZE	01 JAN 2016
FRM CHECK BY	DRAWN BY	
<i>[Signature]</i>	S. JANTZE	

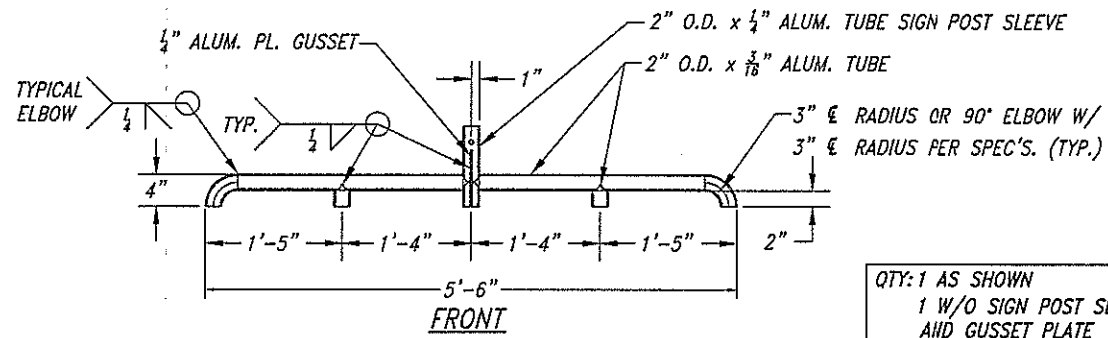


FIBERGLASS DECK PANEL DETAILS
AT CARNAHAN PARK, TRASK RIVER - MILE 1.4
FOR THE CITY OF TILLAMOOK

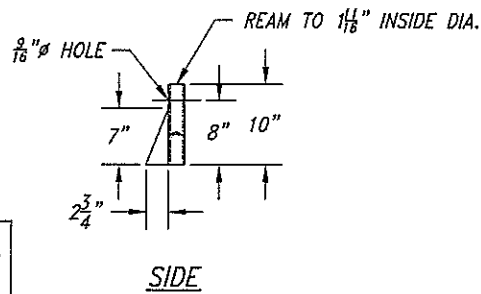
OREGON STATE MARINE BOARD

12	17
SHEET	OF
2915 - 1550 - 12	
DRAWING NO.	

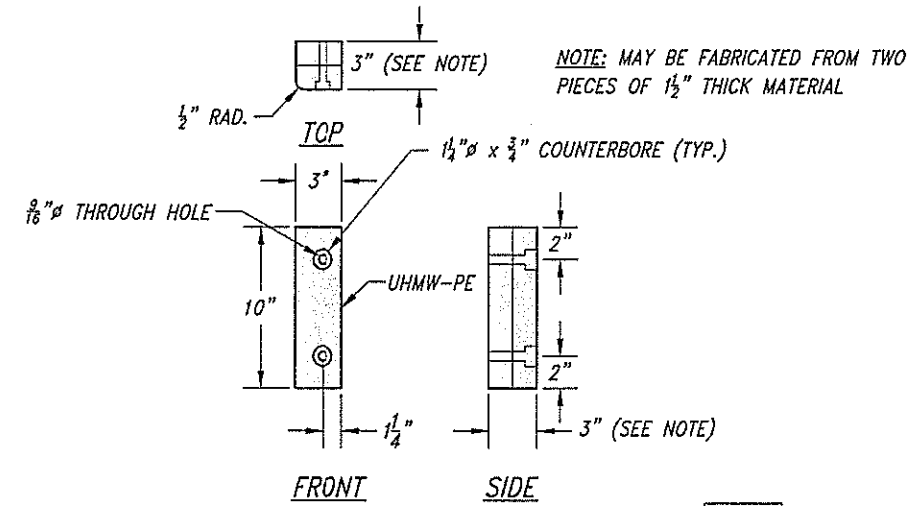
FILE PATH: J:\City 150 Projects\1550 - Carnahan Park (Tillamook City)
FILE NAME: 15 - Fiberglass Decking Details.dwg



QTY: 1 AS SHOWN
1 W/O SIGN POST SLEEVE
AND GUSSET PLATE



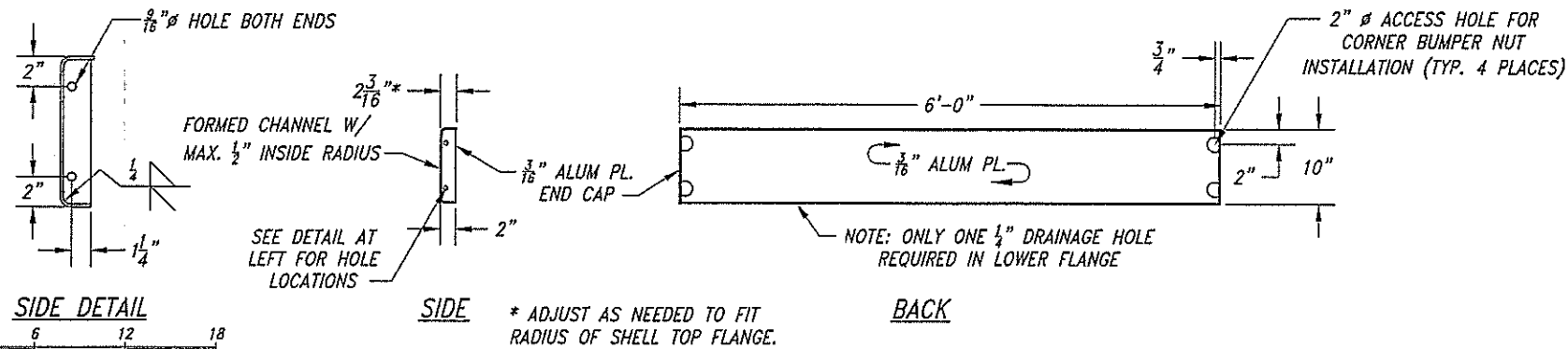
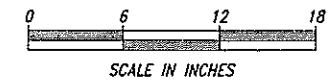
2 END BULLRAIL



NOTE: MAY BE FABRICATED FROM TWO
PIECES OF 1/2" THICK MATERIAL

QTY: 3

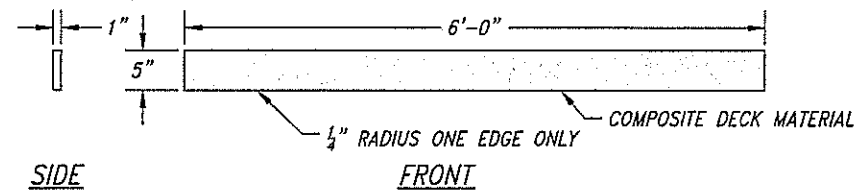
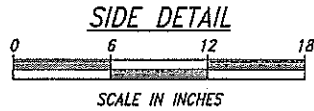
5 CORNER WEAR PADS



* ADJUST AS NEEDED TO FIT
RADIUS OF SHELL TOP FLANGE.

QTY: 2

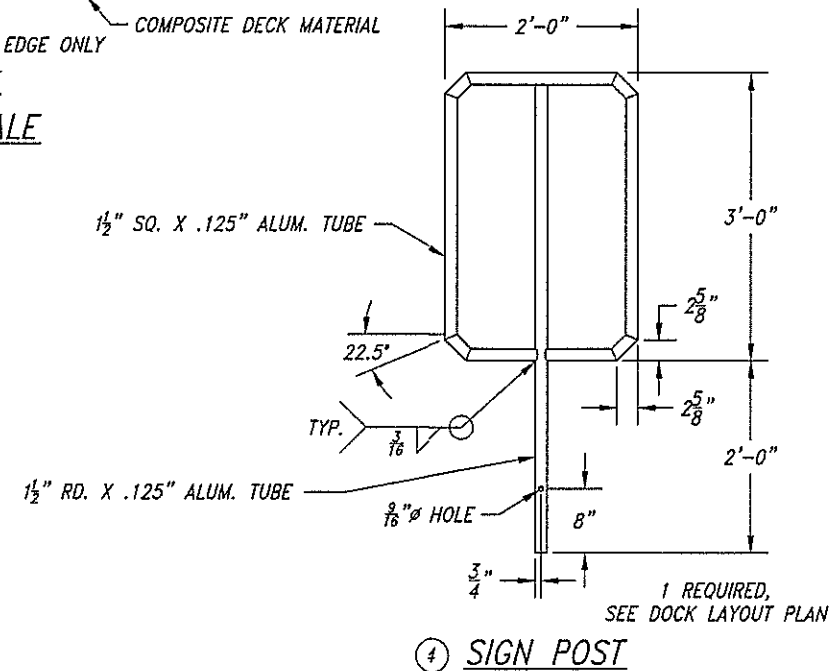
1 END WALE SUPPORT



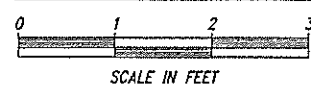
3 END WALE

2 WALES REQUIRED FOR
EACH END DOCK MODIFICATION

QTY: 4



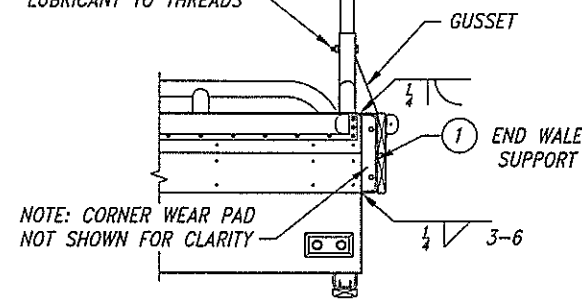
LAST DOCK DETAILS



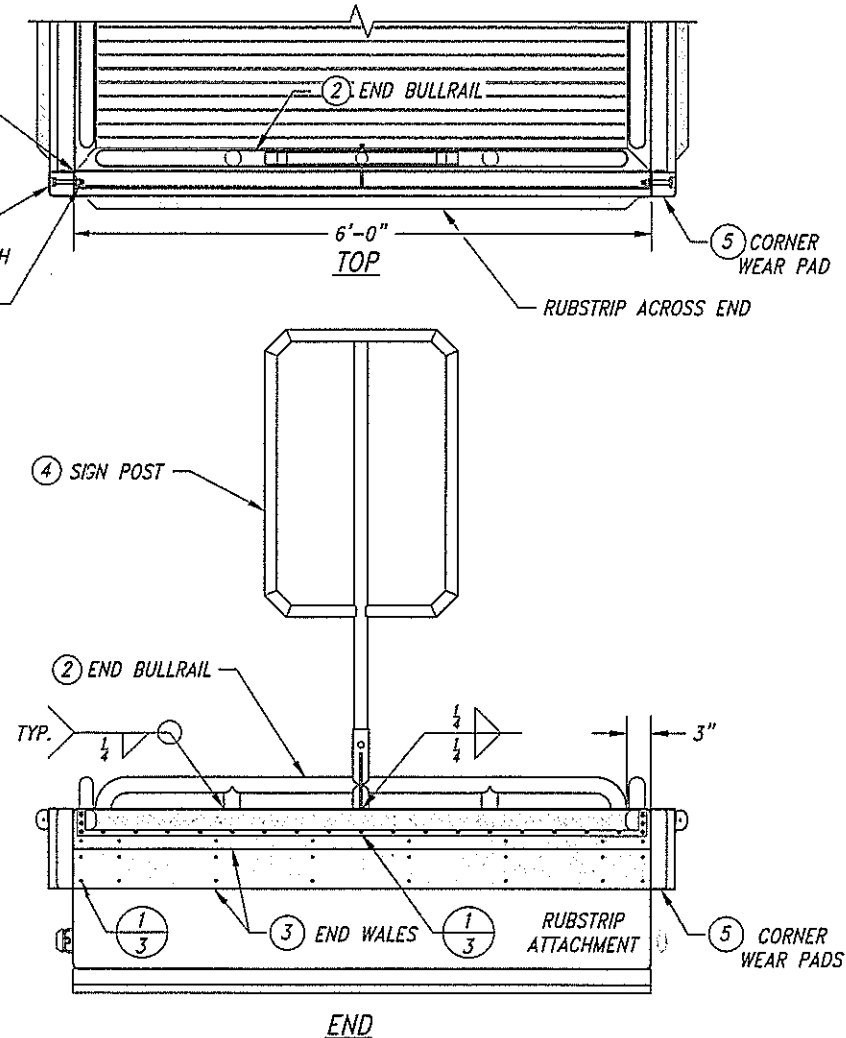
CHAMFER CHANNEL ENDS
TO ACCOMODATE
CHANNEL INTERSECTION

ATTACH CORNER WEAR PAD W/ 1/2" x 3/4"
S.S. BOLT, F.W., L.W. & NUT.
INSERT F.W., L.W. & NUT THROUGH
ACCESS HOLE PRIOR TO
INSTALLATION OF WALES

1/2" x 3" 316 S.S. BOLT, LOCK
WASHER, AND NUT. APPLY
MARINE GRADE ANT-SEIZE
LUBRICANT TO THREADS



SIDE



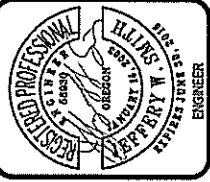
END DOCK MODIFICATIONS

END DOCK MODIFICATION REQUIRED AT 2 PLACES,
SEE DOCK LAYOUT PLAN FOR LOCATIONS.
1 WITH SIGN POST, 1 WITHOUT.

NOTES:
1. ALL PLATE, FLAT BAR, AND FORMED SHAPES SHALL
BE 5086 ALUMINUM ALLOY PER SPECIFICATIONS.
2. ALL ROUND TUBE & PIPE SHALL BE 6061 ALUMINUM
ALLOY PER SPECIFICATIONS.

BY	
REVISIONS	
DATE	

DESIGNED BY	S. JANTZE	DATE	01 JAN 2016
DRAWN BY	S. JANTZE		

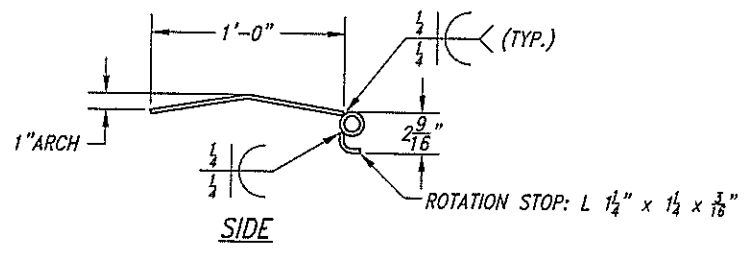
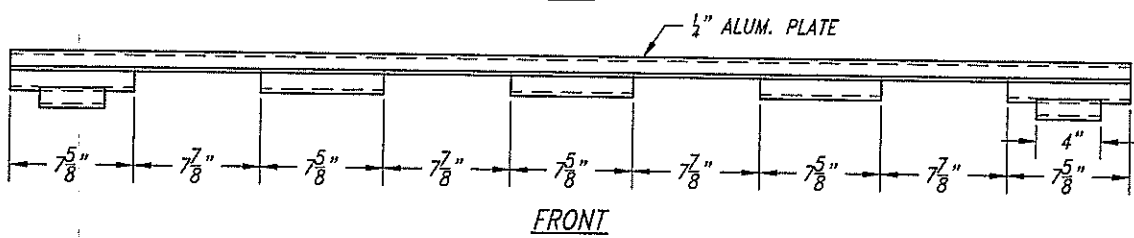
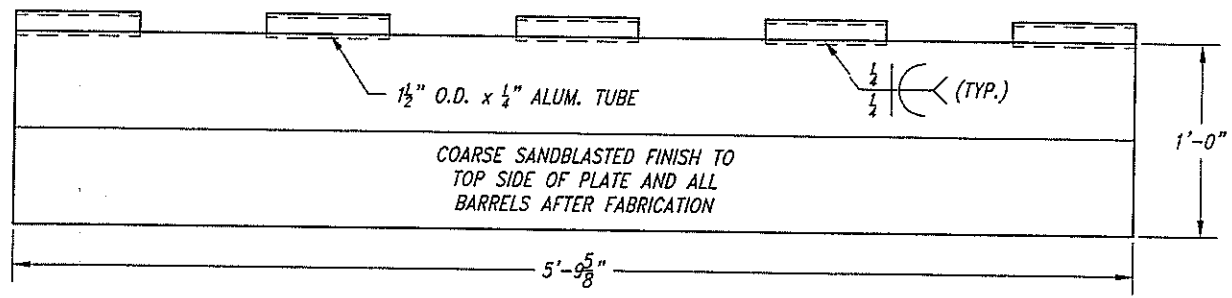


END DOCK MODIFICATIONS
AT CARNAHAN PARK, TRASK RIVER - MILE 1.4
FOR THE CITY OF TILLAMOOK

OREGON STATE MARINE BOARD

13	17
SHEET	OF
2915 - 1550 - 13	
DRAWING NO.	

AS ADVERTISED

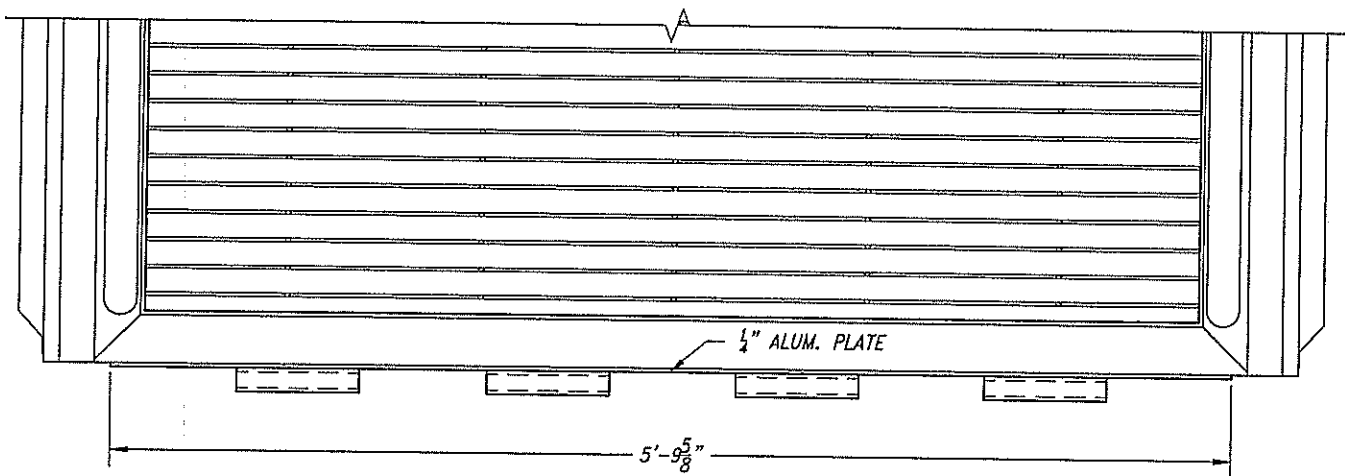


TRANSITION PLATE

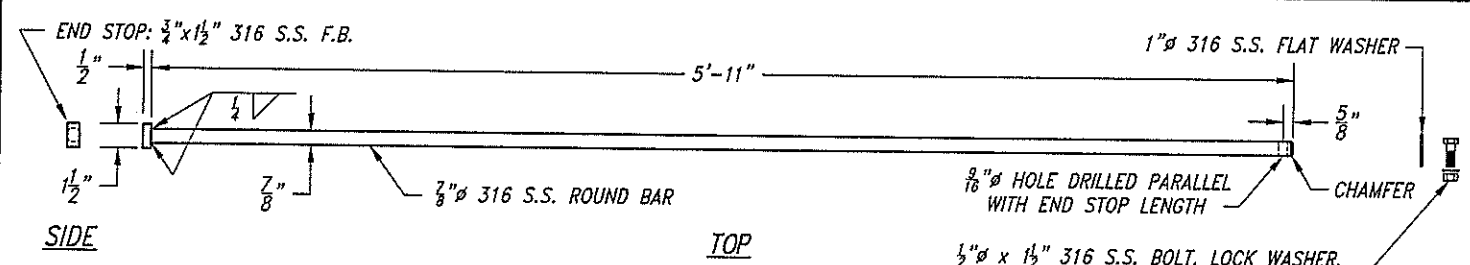
0 6 12 18

SCALE IN INCHES

ONE (1) REQUIRED DOCK D01



TOP



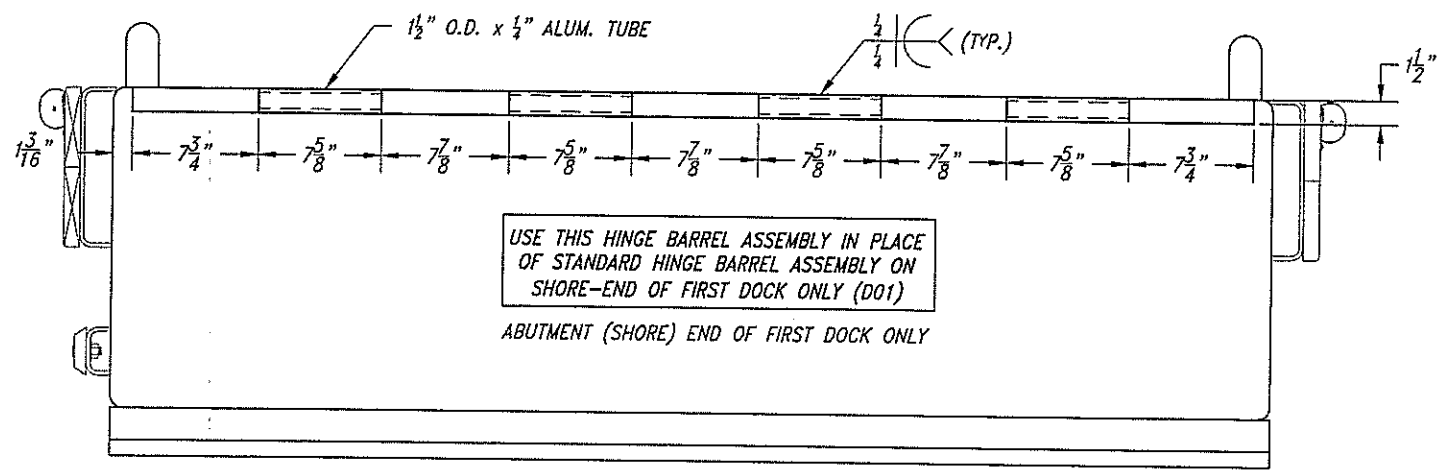
TRANSITION PLATE HINGE PIN

ONE (1) REQUIRED DOCK D01

0 6 12 18

SCALE IN INCHES

NOTE: SUPPLY THIS HINGE PIN IN PLACE OF STANDARD HINGE PIN FOR FIRST DOCK ONLY



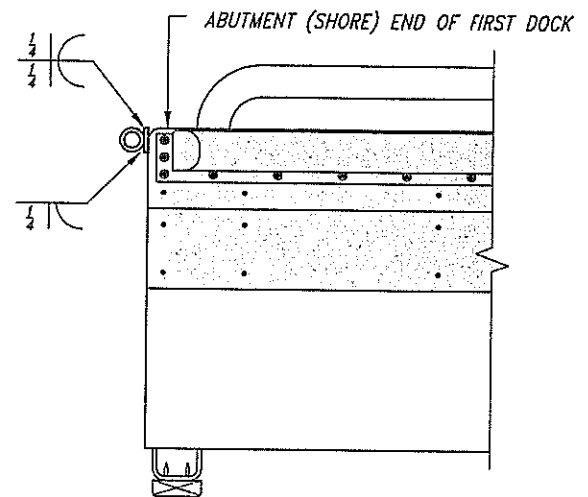
FRONT

TRANSITION PLATE DOCK HINGE ASSEMBLY

ONE (1) REQUIRED DOCK D01

0 6 12 18

SCALE IN INCHES

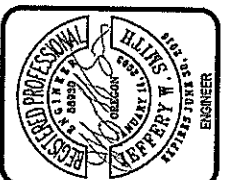


SIDE

NOTE: ALL PLATE, FLAT BAR, AND ROUND TUBE SHALL BE 6061 ALUMINUM ALLOY PER SPECIFICATIONS FOR ALL COMPONENTS THIS SHEET ONLY.

DATE	REVISIONS	BY

DESIGNED BY	S. JANTZE	DATE	01 JAN 2016
DRAWN BY	S. JANTZE	FILE NAME	14-Transition Plate

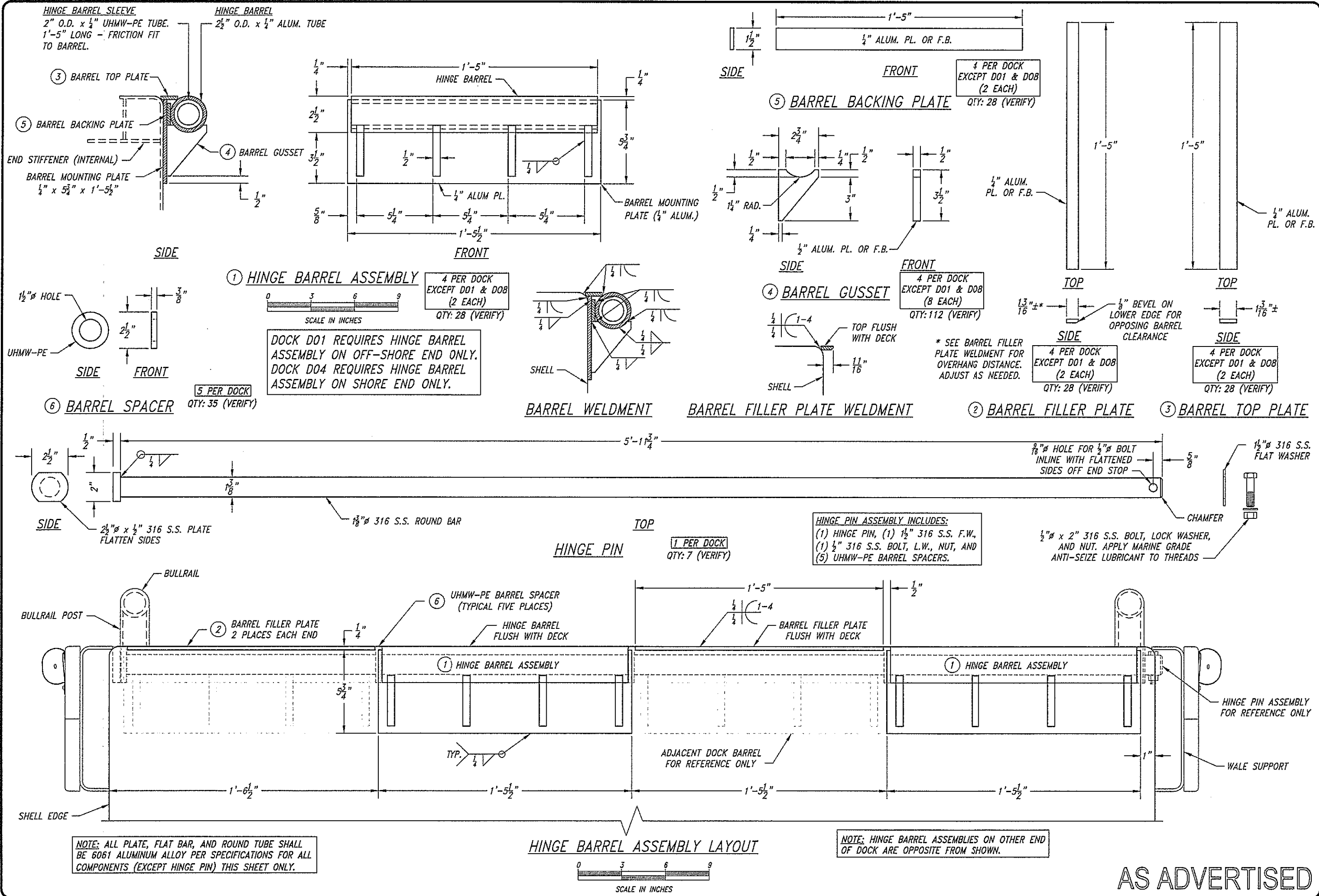


ABUTMENT TRANSITION PLATE
AT CARNAHAN PARK, TRASK RIVER - MILE 1.4
FOR THE CITY OF TILLAMOOK

OREGON STATE MARINE BOARD

14 SHEET	17 OF
2915 - 1550 - 14 DRAWING NO.	

AS ADVERTISED



BY	
REVISIONS	
DATE	

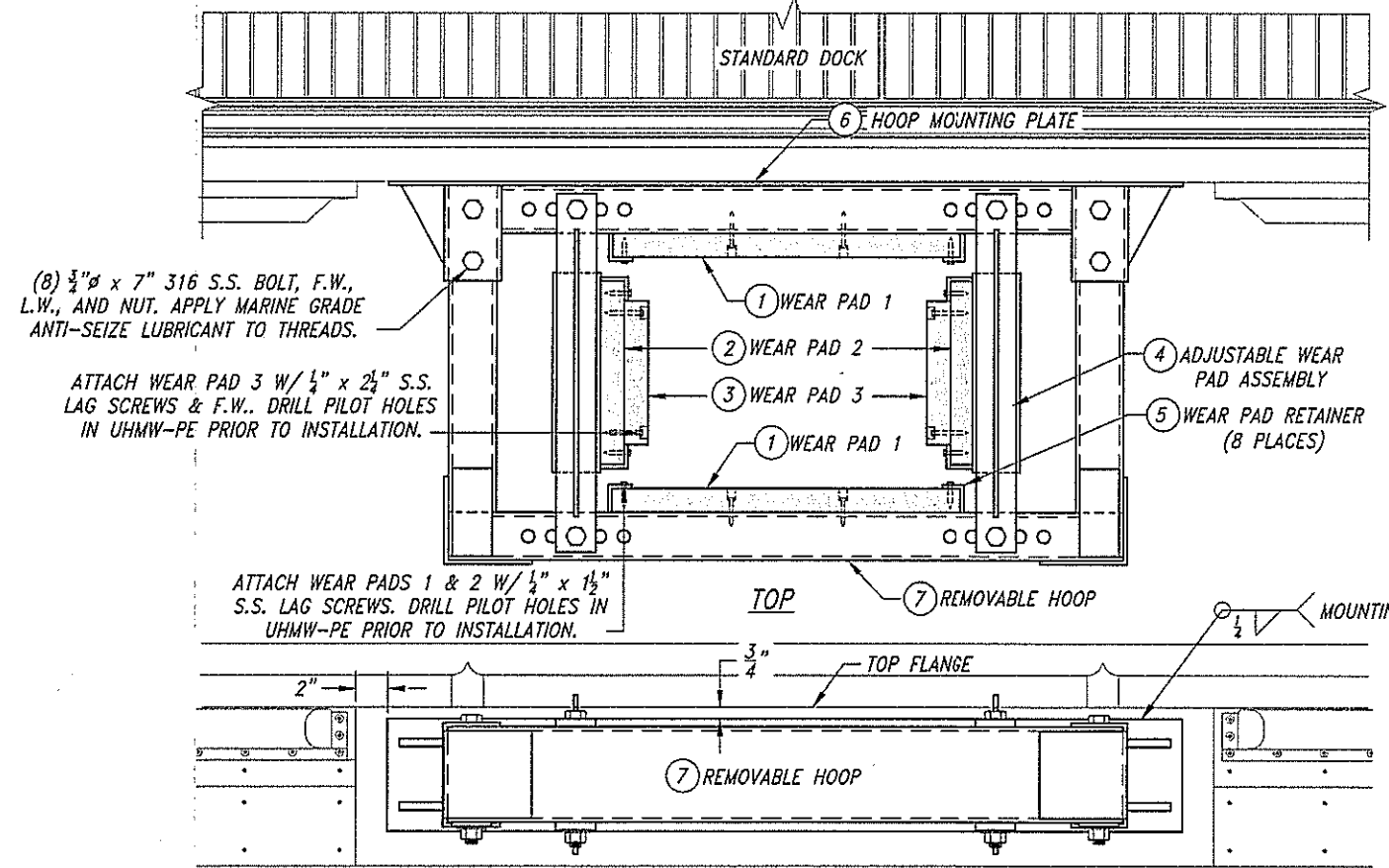
APPROVED: BOATING FACILITIES MANAGER	DESIGNED BY	DATE
<i>[Signature]</i>	S. JANTZE	01 JAN 2016
FINAL CHECK BY	DRAWN BY	
<i>[Signature]</i>	S. JANTZE	



HINGE BARREL ASSEMBLY DETAILS
AT CARNAHAN PARK, TRASK RIVER - MILE 1.4
FOR THE CITY OF TILLAMOOK

OREGON STATE MARINE BOARD

AS ADVERTISED



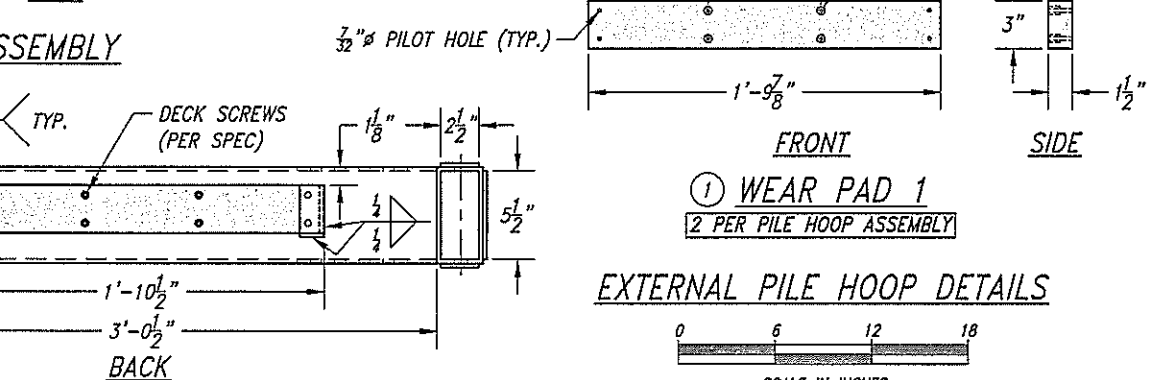
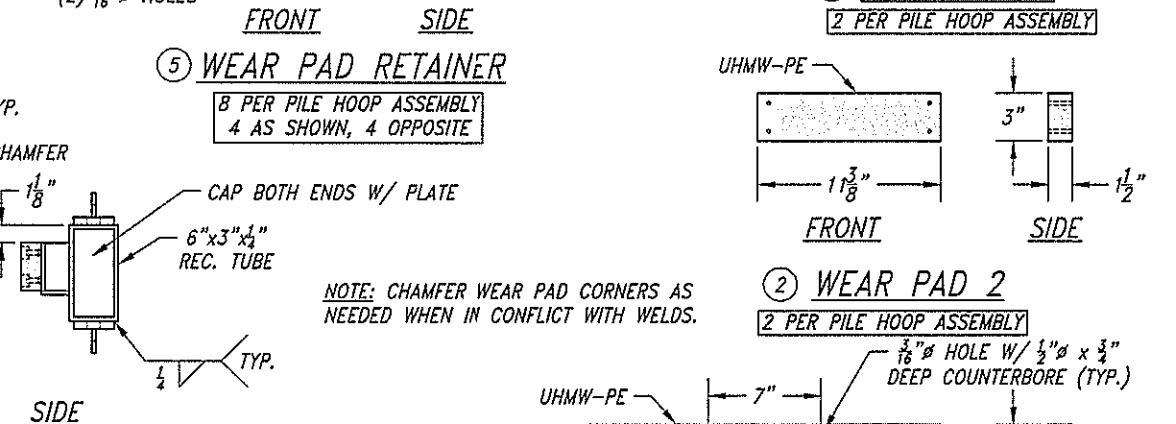
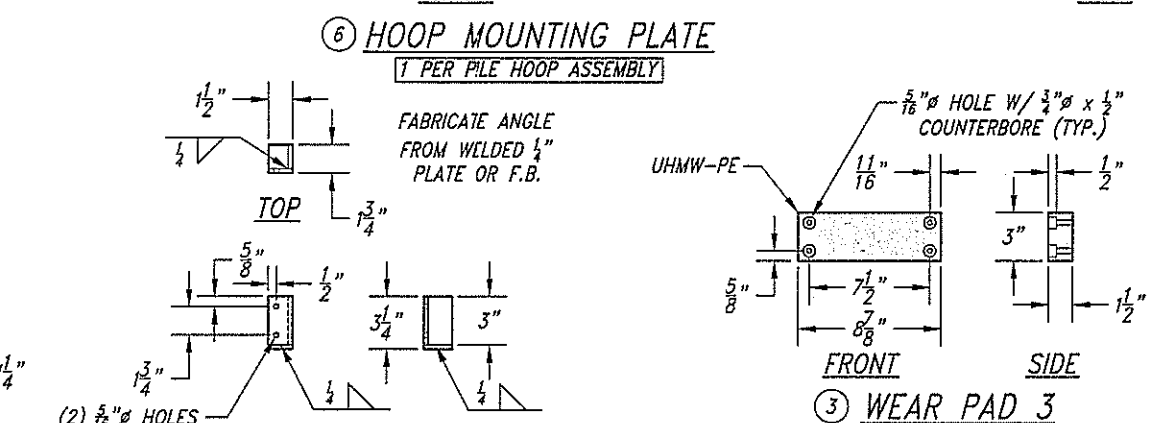
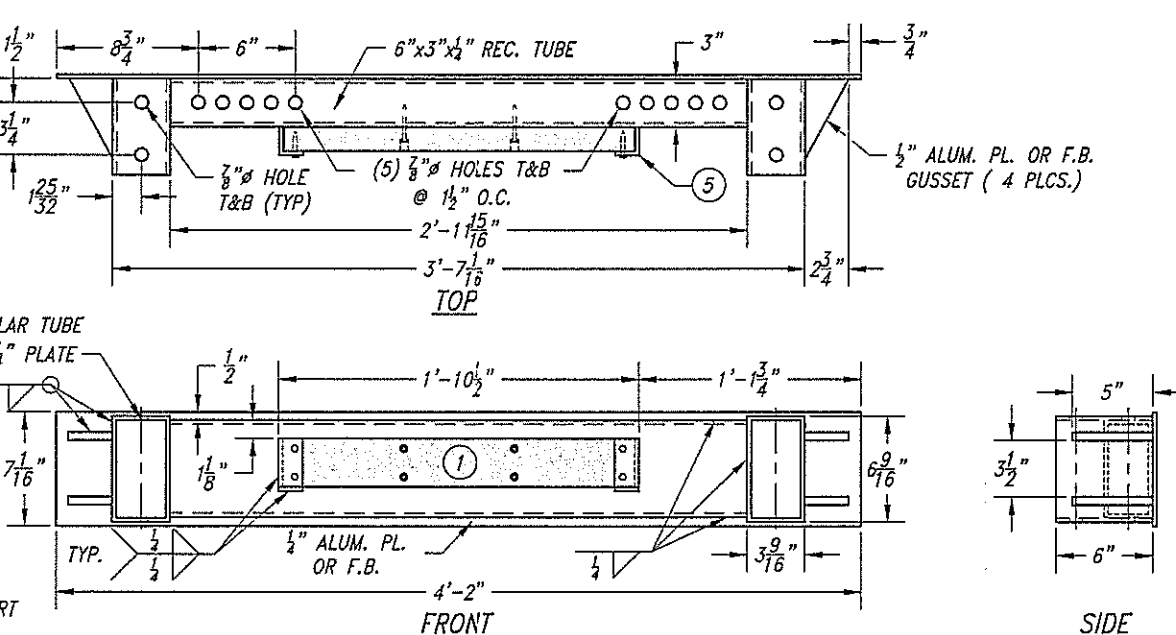
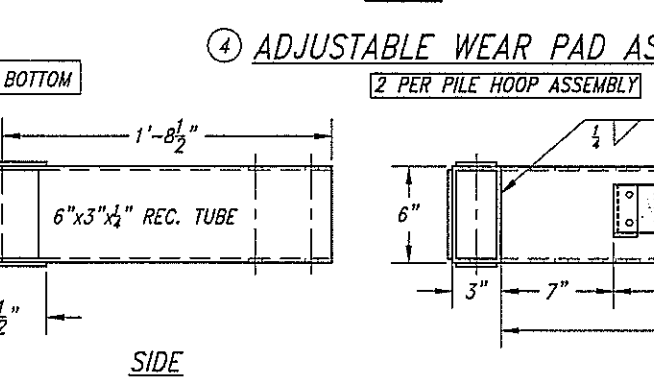
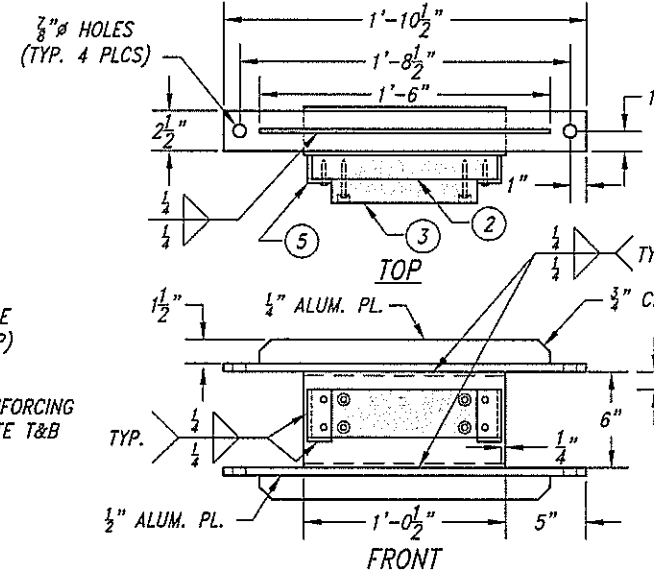
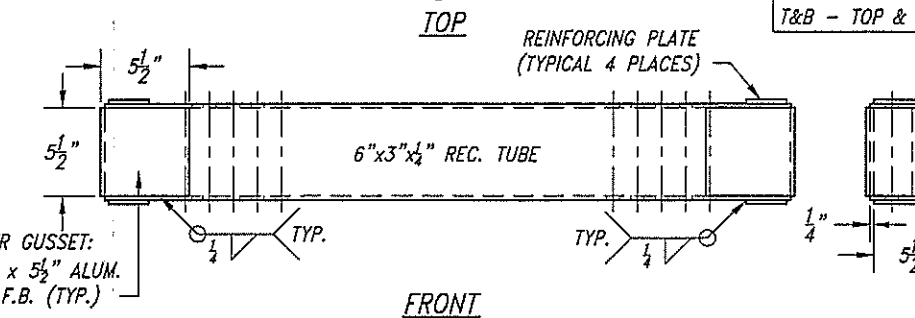
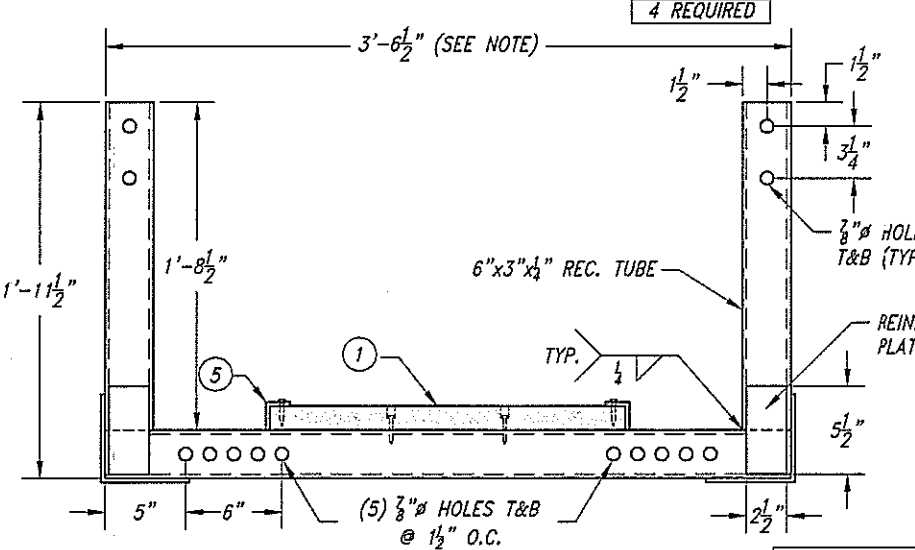
(8) $\frac{3}{4}$ " ϕ x 7" 316 S.S. BOLT, F.W., L.W., AND NUT. APPLY MARINE GRADE ANTI-SEIZE LUBRICANT TO THREADS.

ATTACH WEAR PAD 3 W/ $\frac{1}{4}$ " x $2\frac{1}{2}$ " S.S. LAG SCREWS & F.W.. DRILL PILOT HOLES IN UHMW-PE PRIOR TO INSTALLATION.

ATTACH WEAR PADS 1 & 2 W/ $\frac{1}{4}$ " x $1\frac{1}{2}$ " S.S. LAG SCREWS. DRILL PILOT HOLES IN UHMW-PE PRIOR TO INSTALLATION.

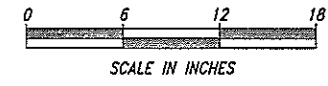
LOCATION ON DOCK VARIES TO ACCOMMODATE ON EXISTING PILE LOCATIONS. SEE DRAWING SHEETS 3B, 3C, & 3D FOR DETAILS

EXTERNAL PILE HOOP ASSEMBLY
4 REQUIRED



NOTE: ALL PLATE, FLAT BAR, AND SHAPES SHALL BE 6061 ALUMINUM ALLOY PER SPECIFICATIONS FOR ALL COMPONENTS THIS SHEET ONLY.

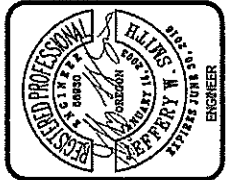
EXTERNAL PILE HOOP DETAILS



AS ADVERTISED

DATE	
REVISIONS	

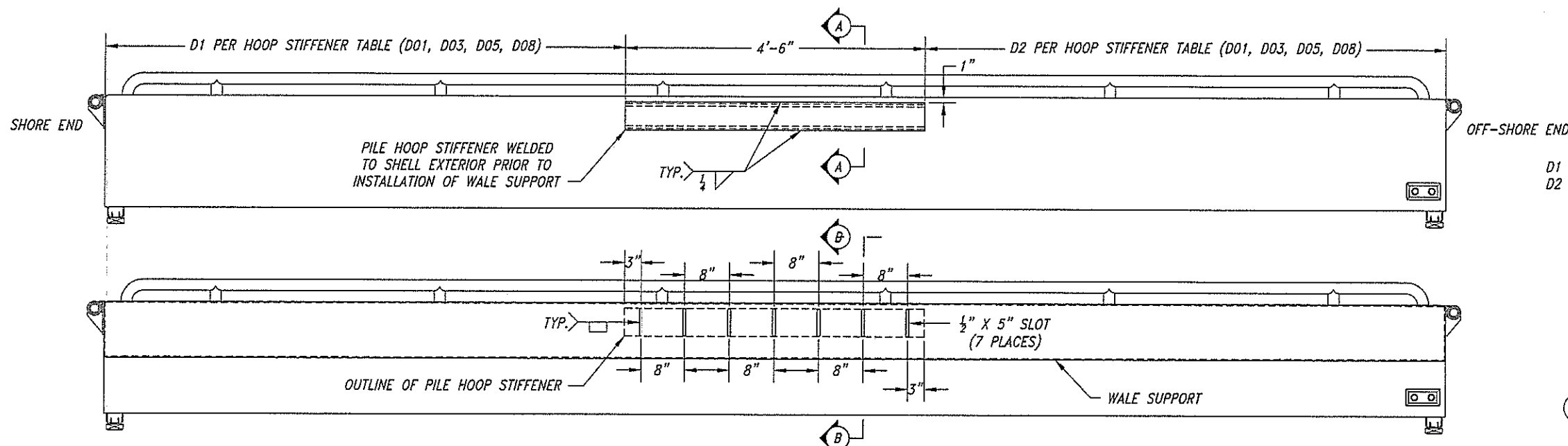
APPROVED: BOATING FACILITIES MANAGER	DESIGNED BY: S. JANTZE	DATE: 01 JAN 2016
FINAL CHECK BY: [Signature]	DRAWN BY: S. JANTZE	



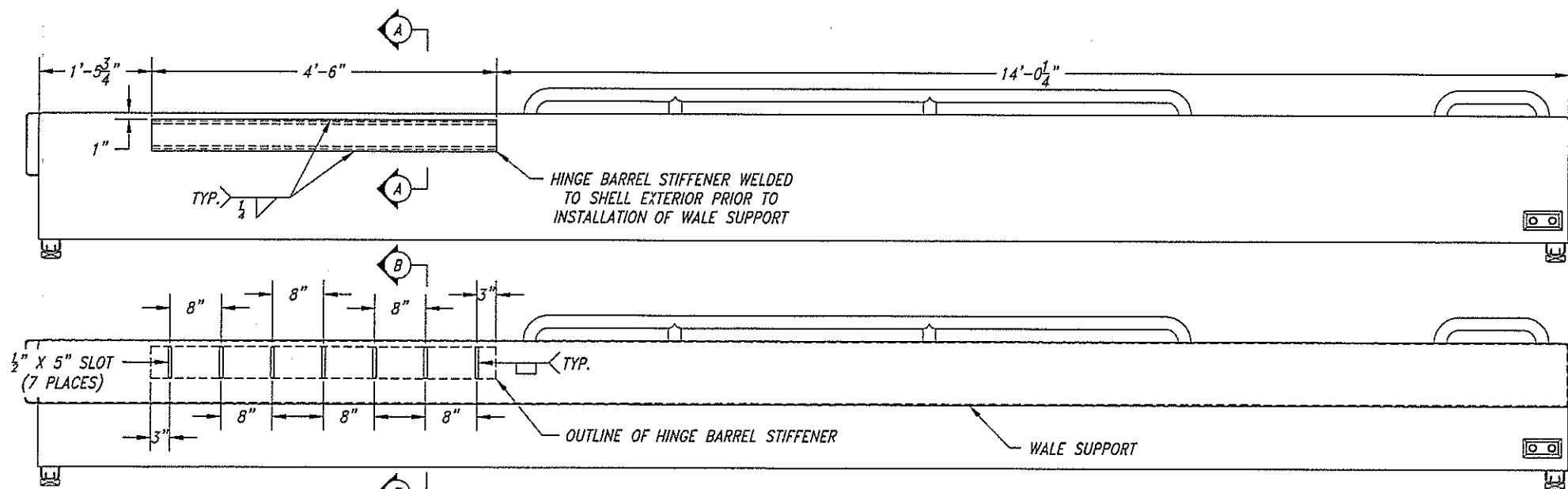
EXTERNAL PILE HOOP ASSEMBLY DETAILS
AT CARNAHAN PARK, TRASK RIVER - MILE 1.4
FOR THE CITY OF TILLAMOOK

OREGON STATE MARINE BOARD

16 SHEET	17 OF
2915 - 1550 - 16 DRAWING NO.	



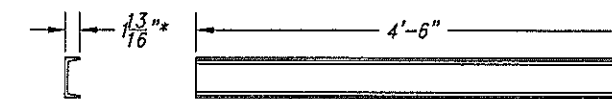
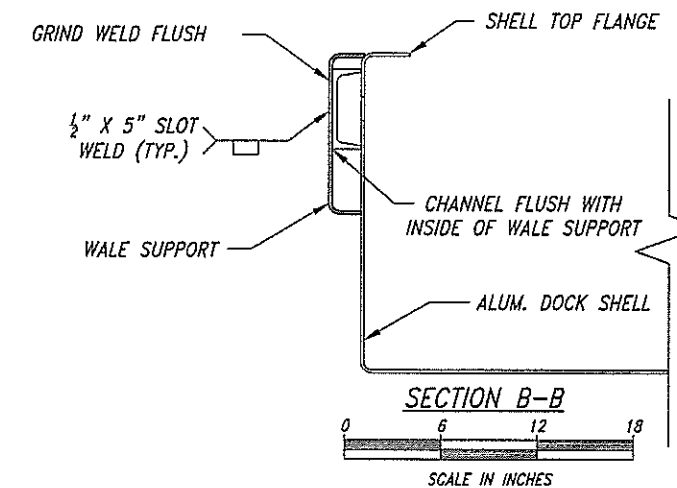
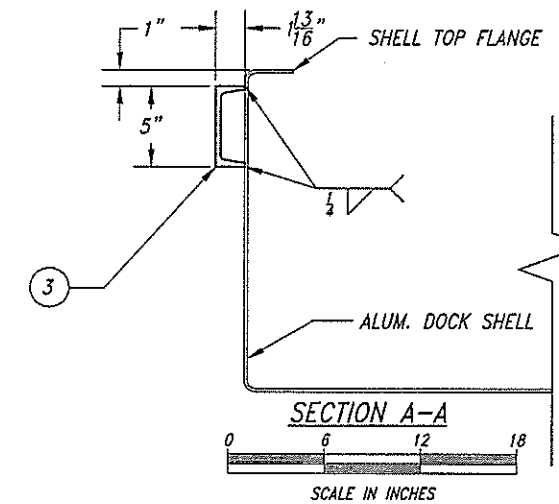
① PILE HOOP STIFFENER (DOCKS W/ PILE HOOP)



② HINGE BARREL STIFFENER (D04 DOCK)

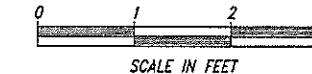
HOOP STIFFENER TABLE		
DOCK No.	D1	D2
D01	2'-3"	13'-3"
D03	6'-11"	8'-7"
D05	8'-1"	7'-5"
D08	8'-2"	7'-4"

D1 = DISTANCE MEASURED FROM SHORE END OF DOCK
D2 = DISTANCE MEASURED FROM OFF-SHORE END OF DOCK



③ PILE HOOP & HINGE BARREL STIFFENER

* TRIM FLANGES $\frac{1}{16}$ " TO ALLOW CHANNEL WEB TO SET FLUSH WITH INSIDE OF WALE SUPPORT



AS ADVERTISED

DATE	REVISIONS	BY

APPROVED: BOATING FACILITIES MANAGER	DESIGNED BY	DATE
FINAL CHECK BY	S. JANTZE	01 JAN 2016
	S. JANTZE	



PILE HOOP AND HINGE BARREL STIFFENERS
AT CARNAHAN PARK, TRASK RIVER - MILE 1.4
FOR THE CITY OF TILLAMOOK

OREGON STATE MARINE BOARD

17	17
SHEET	OF
2915 - 1550 - 17	
DRAWING NO.	